

West Australian Railscene e-Mag

Issue #202 July 30th 2012 free electronic railway magazine

West Australian Railscene e-Mag is published weekly by Jim Bisdee on rail happenings on West Australian Railroads

WWW.WESTERNRAILS.COM

follow West Australian Railscene e-Mag on facebook

Copyright Jim Bisdee © 2012



CFCLA ex Robe River CM40-8M locomotives 9424 in Pilbara Iron livery and 9425 in Robe River livery on transport floats in the fog at Chittering Roadhouse on July 23rd. Photo Jim Bisdee

New CBH locomotives continue to arrive with CBH007 and CBH008 arriving at Port of Fremantle on July 20th, with them being railed at North Port on 25th. ZB2120 hauled WAMX2706 and WAMX2707 the covered CBH locomotives to Gemco Forrestfield on May 25th.

Locomotive commissioning continues at Gemco Forrestfield with CBH006 running to Kwinana to enter service on July 20th CBH003 then ran light engine to CBH Kwinana on 26th. CBH006 hauled 5M61 wagon movement to West Merredin on July 26th then ZB2125 ran light engine back to Gemco Bellevue on 27th.

The northern section of the rebuilt Mullewa to Perenjori line from Monger to Sullivan was completed in mid July with the new higher axle load line then being opened.



P2503 & P2511 on empty grain train at Boyerine July 27th.

Photo Don Copley



RR24M30 Speno Rail Grinder on Victoria Quay Fremantle July 26th.

Photo Matt Hayes



CBH001 & CBH002 on empty Watco grain train at Lime Lake July 27th.

Photo Don Copley



LZ3117 & LZ3114 on 4142 container train departing Forrestfield July 17th.

Photo Mark Bennett



L3113 on 4196 container train departing Forreestfield July 17th.

Photo Mark Bennett



DBZ2308 & P2511 on grain passing Katanning station July 20th.

Photo Don Copley



P2513, AB1504 & DFZ2405 on 7720 empty Perenjori ore train at Bringo July 21st.

Photo Phil Melling



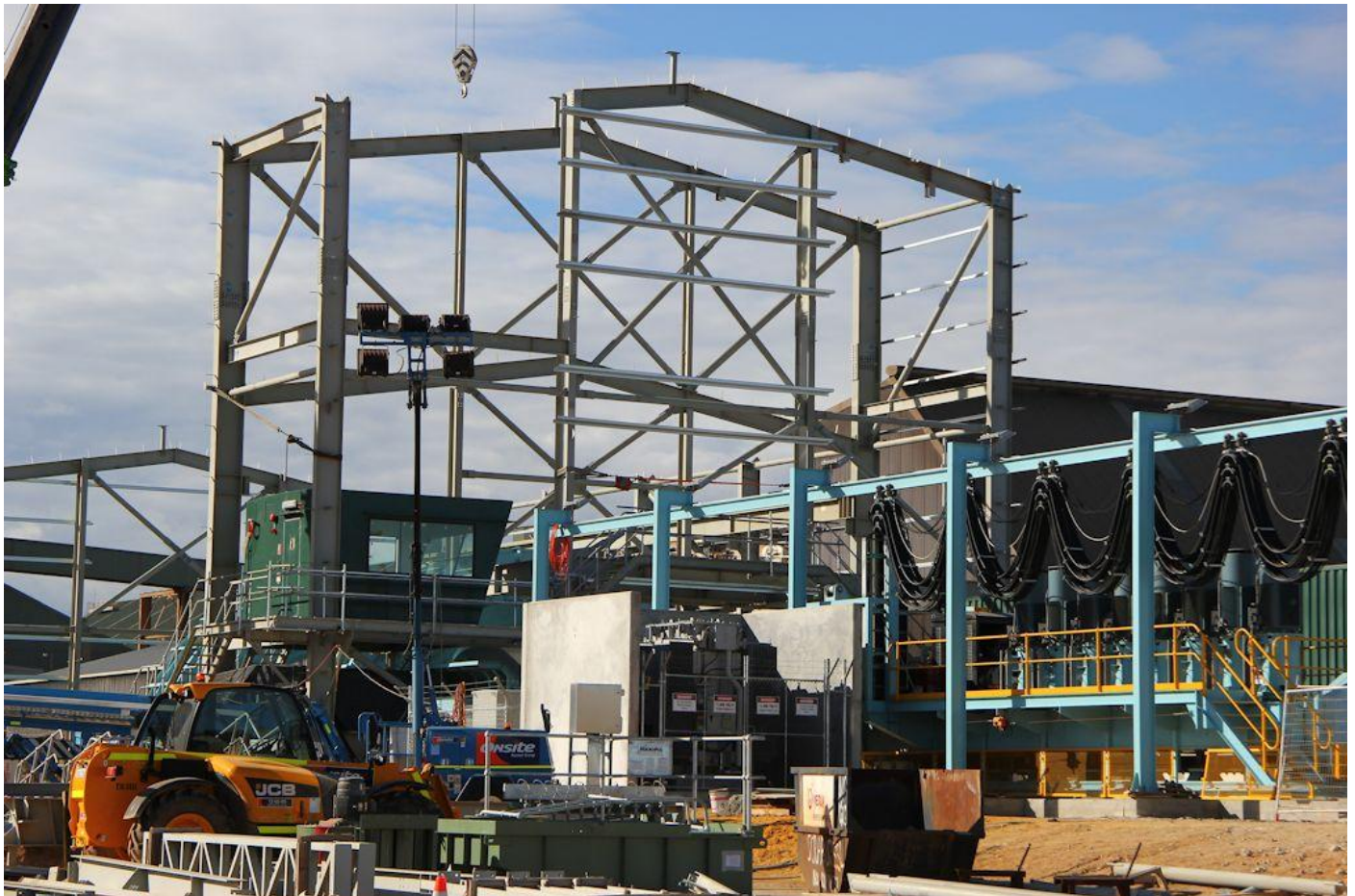
Two Plasser Australia tampers at Victoria Quay Fremantle July 26th.

Photo Matt Hayes



CFCLA CM40-8M 9424 and 9425 at Chittering Roadhouse July 23rd.

Photo Jim Bisdee



The new two car rotary dumper taking shape at Port of Geraldton July 21st.

Photo Phil Melling



CBH004 on Watco grain arriving Mingenew while grain bin gets extensive work 15/7. Photo Phil Melling



8033 runs light engine from Sadleir Logistics Kewdale July 17th.

Photo Mark Bennett



L3110 on 3025 Kwinana shunter departing Forrestfield July 17th.

Photo Mark Bennett



SCT011 on 7S55 empty Watco grain at Woodbridge July 21st.

Photo Jim Bisdee



CBH004 on Watco grain south of Mingenew July 15th.

Photo Phil Melling



VL357 & VL361 on 1056 Watco grain train on east leg of Woodbridge triangle 22/7.

Photo Jim Bisdee



ACA6005 & ACA6002 on 1030 ore train at Hazelmere July 22nd.

Photo Jim Bisdee



LZ3120 on 3SG1 empty tankers to BP terminal Kewdale July 17th.

Photo Mark Bennett

All eight CFCLA former Robe River CM40-8M locomotives have now been delivered from Dampier to United Group Rail for overhaul with arrival of 9425 and 9424 on July 23rd. Overhaul of the first four units that arrived earlier in the year continues with former 9410 having been painted into CFCLA livery.



9424 and 9425 on transport floats Railway Parade Bassendean July 23rd.

Photo Jim Bisdee

Platforms 2 and 3 at Midland Station as part of upgrading Midland line were rebuilt over evening July 20th through to early hours of 23rd, saw services suspended from around 2000 on 20th to first service on 23rd .

Bennet Brook Railway a 610mm tourist line operating in Whiteman Park will hold an “Enthusiasts Day” on Saturday August 4th between 10am and 5pm. This will allow BBR to operate different locomotives and trains and consists that are not normally seen on their regular operations. There will be passenger trains, a goods train and original 4 wheel coaches will be in use.