

West Australian Railscene e-Mag

Issue #216 October 29th 2012 free electronic railway magazine

West Australian Railscene-Mag is published weekly by Jim Bisdee on rail happenings on West Australian Railroads

WWW.WESTERNRAILS.COM

follow West Australian Railscene e-Mag on facebook

Copyright Jim Bisdee © 2012



DC2205 & DC2213 on 7142 container train under the wires crossing Swan River at east end of Fremantle Harbour on its way to North Port Container Terminal October 6th.

Photo Sean McGarraghy

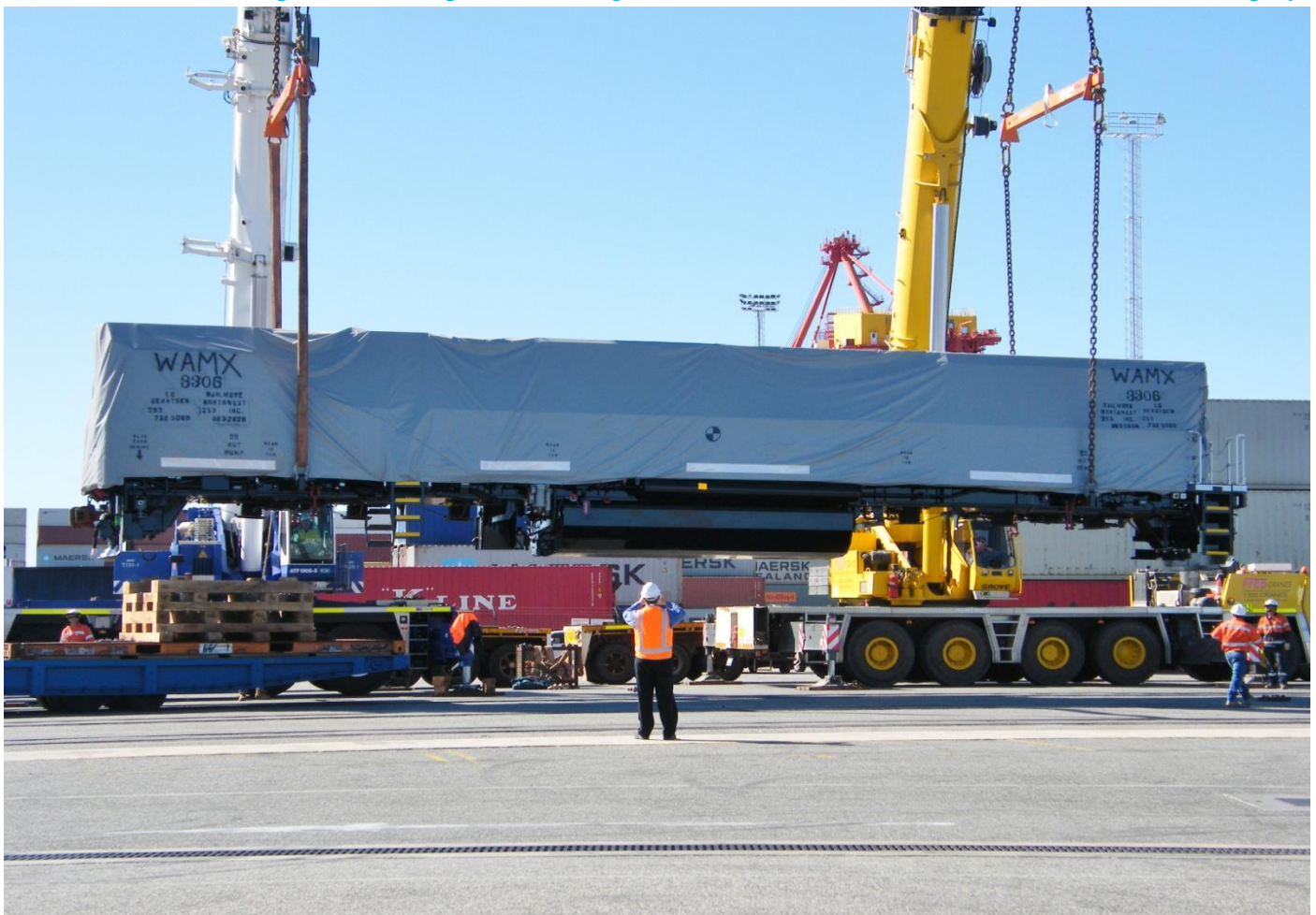
The final two narrow gauge MP33CN arrived by sea at Fremantle from Savannah Ga on October 22nd with them being railed as usual at North Port Container Terminal on 23rd. ZB2120 as 3K09 hauled WAMX3304 [CBH016] and WAMX3305 [CBH017] to Gemco Forrestfield for commissioning. This completes the CBH order of 11 light MP27CN and 6 heavy MP33CN narrow gauge locomotives manufactured by MotivePower Inc of Bosie Idaho for CBH Group.

The first of five standard gauge MP33CN locomotives WAMX3306 [CBH118] arrived at Fremantle from Savannah Ga on October 24th. This locomotive was railed at North Port Container Terminal on 25th. SCT014 ran light engine to North Port that saw the first SCT locomotive to run on PTA system and run under the wires in WA to collect WAMX3306. SCT014 hauled WAMX3306 to Gemco Forrestfield for commissioning. All these standard gauge locomotives have been completed with two on the high seas and the final two at Savannah Ga being prepared for export to Fremantle.



SD40R 3080 & SD40R 3079 now only used on construction trains, top and tail on ballast train at Finucane Island October 17th as part of line duplication being undertaken.

Photo Don Copley



WAMX3306 [CBH118] suspended in mid air at North Port Terminal October 25th as its transport float is towed away and waits for its bogies to be put in place before its is lowered.

Photo Jim Bisdee



P2504 & P2507 on QRN grain train at Tambellup October 23rd.

Photo Daryle Phillips



AB1503, AB1502 & P2504 on 4342 QRN grain at Brigadoon September 12th.

Photo Sean McGarraghy



6021 & L3108 on 2MP1 QRN intermodal at Toodyay on September 27th.

Photo Sean McGarraghy



CBH014 & CBH015 on Watco grain train stabled at Brookton CBH October 21st.

Photo Daryle Phillips



ZB2120 hauls WAMX3304 and WAMX3305 on 3K09 at Thornlie October 23rd.

Photo Jim Bisdee



CM40-8M 5669, 5667 & 5637 on empty ore train through Kalgan Junction October 21st. Photo Don Copley



SCT014 & WAMX3306 [CBH118] on 5S67 light engines at Forrestfield October 25th. Photo Jim Bisdee



ACN4146 & ACN4151 on empty Karara ore train at Mullewa October 21st. Photo Phil Melling



ACN4149 DPU on loaded ore train at Mullewa October 21st.

Photo Phil Melling



Queens Park Station being upgraded and improved October 21st.

Photo Jim Bisdee



SD70ACe 4339 & 4332 on loaded ore train departing Mt Whaleback world's largest open cut iron ore mine for Newman and export through Port Hedland October 23rd. Photo Don Copley



SCT014 on 5S66 light engine on PTA North Port line North Fremantle October 25th. Photo Jim Bisdee

6003 & G516 only with a crew car and having no loading ran interstate as 3PM1 QRN intermodal out of Forrestfield on evening of October 23rd.



NR41 & NR21 on 1PS6 intermodal at Herne Hill October 21st.

Photo Alex McKay



CBH011 & CBH004 on 4K63 empty Watco grain at Hazelmere October 3rd.

Photo Brendan Cherry



P2503, DAZ1902 & AB1502 on 4342 empty QRN grain at Cadoux October 3rd. Photo Brendan Cherry



ZB2125 on 1K41 Watco light engine to Wongan Hills to run ballast trains on McLevie line upgrading for Qube Logistics departing Midland October 21st. Photo Alex McKay



L3110 on empty ammonia tankers ex Leonora running on 1478 path crossing Piccidilly Street on the eastern side of Kalgoorlie as it approaches the junction with east west line October 21st. Photo Peter Donaghy



DC2213 & DC2205 run 6141 container train through Kewdale October 19th. Photo Brian Lynn



CBH011 on John Holland ballast train climbs grade north of Ballidu October 27th.

Photo Jim Bisdee



L3116 & L3110 on 6478 empty fuel tankers at West Kalgoorlie October 19th.

Photo Peter Donaghy



ACB4401 on 6430 empty sulphur train at Middle Swan October 20th.

Photo Simon Barber



2512, DFZ2404 & DFZ2406 cross ACN4148 on Karara ore at Grants October 20th.

Photo Phil Melling



DC2215 & ACA6009 on 2034 ore train to Kwinana at Jandakot October 15th. Photo Sean McGarraghy



ACN4169, ACN4148 & ACN4171 at Narngulu East October 12th. Photo Phil Melling

K208 following overhaul ran back light engine from Gemco Bellevue on October 13th to SCT Forrestfield with H2 having earlier ran over light engine for overhaul.

DR8404 previously Hamersley Iron C636R 3011 was rebuilt at GTSA Engineering in Maddington for Greentrains in May/July 2008 for use in Pilbara but never saw any use is being scrapped at Gemco Bellevue. Proposed DR8406 was never completed and remained in Hamersley Iron livery as ex 3008 was scrapped at Maddington in late August/early September.



CBH009 & CBH003 on Watco grain at Willock Drive Geraldton October 13th.

Photo Phil Melling

Final QRN fleet changeover at Albany took place in late September when P2503 & DBZ2303 went north and P2504 & P2507 came south on 25th. Albany woodchip wagon fleet hauled by DD2356 & DD2358 went north on October 2nd for Wagin with DD2356 & P2511 returning on 14th while DD2358 remaining at Forrestfield under repair. Watco changed over its fleet on October 23rd with CBH001 & CBH002 coming north while heavy CBH014 & CBH015 ran south as all lines radiating out of Albany are 20tonne axle load.

There are now 33 locomotives at Geraldton the probably the most ever, in steam days on June 30th 1954 there were one Msa, 15 L, three Cs and three G, steam locomotives 22 locomotives that were replaced by eight X and four Y class diesel locomotives [12 units] with dieselation by December 31st 1955. Now there are 29 QRN locomotives and four CBH locomotives in use.
