

West Australian Rails

Number 05

Free photo e-Mag covering rail happenings April June 2013

Jim Bisdee publisher

e-mail pm1225@bigpond.com

Copyright Jim Bisdee © 2013



P2506 on 4RT1 rail train at Swan View on May 15th.

Photo Simon Barber

This issue 05 is the second part of April to June issue of free e-Mag, West Australian Rails covering May happenings. During May Aurizon ran rail trains for Brookfield Rail together with continuing ballast programme, the first Pacific National 93 class arrived at Kewdale for crew training, CBH017 spent some time without its engine in SSRS/Gemco yard Bellevue, DBZ2310 returned to service following accident repair but was not repainted into Aurizon livery, work continued on rebuilding Perth City Station and constructing tunnel to sink the Fremantle line and link City and Northbridge.



ACC6032 & ACB4406 on 7C71 Parkeston shunter departing Kalgoorlie May 4th.

Photo Peter Donaghy



CBH008 & CBH007 on 5G50 Watco grain climbing grade out of Pintharuka May 2nd.

Photo Simon Barber



DFZ2402, DFZ2401 & DFZ2403 on 4763 Karara ore loaded at Mt Gibson Perenjori, Tardun May 2nd.



ACN4144 DPU on 5760 empty Karara ore at Kadji Kadji, on way to the mine 2/ 5. Both photos Simon Barber



ACC6032 on 7405 empty acid tankers to Hampton at Binduli May 4th.

Photo Peter Donaghy



ACN4170 & ACN4145 DPU ACN4170 on empty Karara ore to mine Kadji Kadji May 2nd. Photo Simon Barber



P2514, DFZ2405 & P2503 on Mt Gibson Perenjori ore at Tilley May 2nd.

Photo Simon Barber



U201 & R1902 on 3QB4 light engines departing flashbutt siding Midland 8/5.

Photo Simon Barber



NR84 & NR59 on 6PM5 intermodal Middle Swan May 24th.

Photo Simon Barber



DBZ2310, DD2357 & DBZ2311 on 5124 light engine [DBZ2310 return to service] Thornlie 30/5. Photo Jim B



CBH010, CBH006 & CBH001 on K05 empty Watco grain at Middle Swan May 19th.

Photo Simon Barber



CBH003 on Watco grain Separation Point Geraldton May 26th.

Photo Phil Melling



DFZ2403, DFZ2405 & DFZ2402 on Karara ore from Perenjori climbing grade out of Morawa 07/05. Photo JB



DFZ2403, DFZ2405 & DFZ2401 on Karara Perenjori ore train at Tenindewa May 12th. Photo Phil Melling



NR39, NR36, NR37, NR108 & NR97 on 1PM5 intermodal at Stratton May 26th.

Photo Jim Bisdee



CBH002 on 6M52 empty Watco grain West Merredin Narembeen at Collgar May 24th.

Photo Jim Bisdee



NR77, NR5 & 9301 [for crew training Kewdale] on 7MP5 intermodal at Stratton 14/05. Photo Simon Barber



NR77, NR5 & 9301 with inline fuel tanker on 7MP1 at Stratton May 14th.

Photo Simon Barber



P2501 & 2512 on empty Mt Gibson ore at Bringo May 12th.

Photo Phil Melling



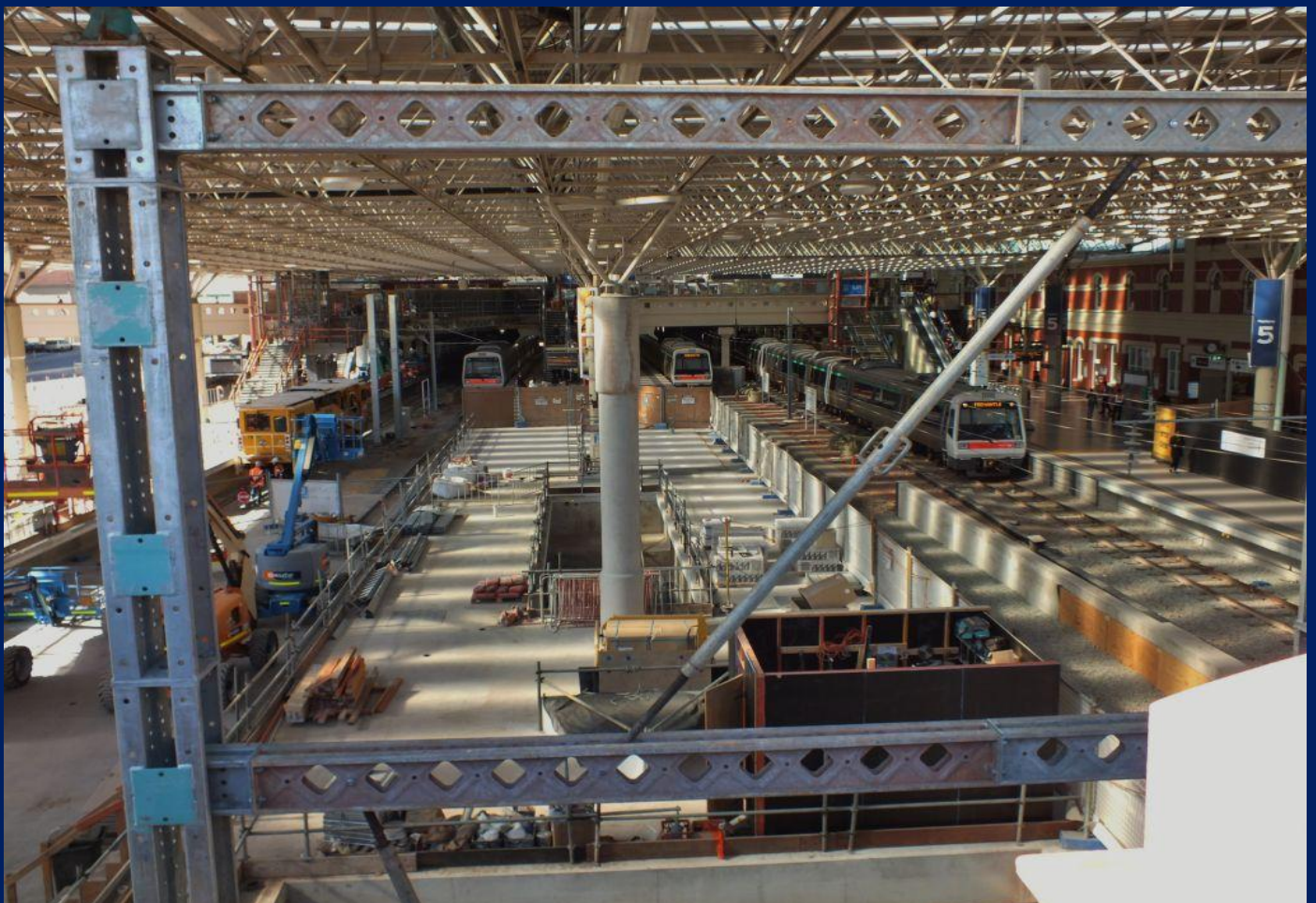
Perth Station with platforms 5 and 6 as through Fremantle line tracks May 12th.

Photo Jim Bisdee



Fremantle train on Platform 5 Cannington on 6 at Perth City Station May 12th.

Photo Jim Bisdee



Perth City Station during rebuilding as part of sinking Fremantle line May 12th.

Photo Jim Bisdee



Fremantle line tunnel under construction with Fremantle line and platform 11 on 12/05. Photo Jim Bisdee



Fremantle lines to right, Clarkson line in centre and new Fremantle line alignment to left 12/05. Photo Jim B



ACN4168 & ACN4142 on empty Karara ore at Kojarena May 12th.

Photo Phil Melling



NR87, NR41, NR27 & NR114 on 1PM5 at Midland with new hospital under construction 19/05. Photo Jim B



P2506 on 2RT3 rail train in loop Midland waiting for a path up Avon Valley May 20th.

Photo Jim Bisdee



ACA6002 on 6032 ore train approaching Doodlakine May 24th.

Photo Jim Bisdee



NR84 & NR59 on 6PM5 departing crossing loop Meckering May 24th.

Photo Jim Bisdee



CBH118 & CBH122 on 6S58 Watco grain at Meenaar May 24th.

Photo Jim Bisdee



CBH119 & CBH121 on 6S56 Watco grain wrong line running just west of Avon Yard 24/05. Photo Jim Bisdee



ACN4175 & ACN4143 on 5120 light engine Forrestfield to Kwinana at Thornlie 09/05. Photo Jim Bisdee



ACN4143 & ACN4175 on 5120 light engine at Thornlie May 24th.

Photo Jim Bisdee



Q4003 & LZ3103 on 5032 ore to Kwinana at Thornlie May 24th.

Photo Jim Bisdee



LZ3106 & Q4003 on 4035 empty ore ex Kwinana at Welshpool May 8th.

Photo Simon Barber



CBH017 with no engine in SSRS/Gemco yard Bellevue 04/05 where it was removed.

Photo Jim Bisdee



ACC6030 & ACC6031 on 6031 empty ore ex Kwinana at Welshpool May 3rd.

Photo Jim Bisdee



ACN4148 & ACN4146 dpu ACN4151 on empty Karara ore at Morawa May 6th.

Photo Jim Bisdee



ACC6031 & ACC6032 on 6031 empty ore in full dynamic as prepares to stop Welshpool 03/05. Photo Jim B



ACN4148, ACN4146 dpu ACN4151 with old WMC mine in distance 06/05. Photo JB