

West Australian Rails

Number 07

Free photo e-Mag covering rail happenings July September 2013

Jim Bisdee publisher

email: pm1225@bigpond.com

Copyright Jim Bisdee © 2013



LZ3106, DC2205 & DC2213 on 2196 container train crossing the Swan River at Fremantle July 8th on only section of PTA track that sees regular freight movements.

Photo Simon Barber

More SD70ACe locomotives arrived at Port Hedland from EMD at Muncie for BHPBIO that will now see General Electric AC6000s withdrawn and withdrawal of CM40-8M Goninan/GE rebuilds commence, Qube General Electric UM20C saw use on rail trains following its conversion to air braking. Fremantle line tunnel was bought into use that saw platform 5 become dead end platform, with Fremantle trains again running Midland Fremantle instead of Armadale Fremantle as had been case. Fremantle line is now on south side of Joondalup line not north side as it had been since NSR line opened. B series EMU set that ran morning services Monday to Friday to Thornlie has been discontinued following opening of Fremantle tunnel.



Q4004 & LZ3112 run late 6029 sulphur out of Kalgoorlie on Leonora line July 6th. Photo Peter Donaghy



S3301 runs 2944 bauxite out of Keysbrook on way to Kwinana Refinery July 1st. Photo Jim Bisdee



DBZ2307 runs 2271 lime from Cockburn Cement to Worley Alumina Hamilton at Keysbrook 1/7. Photo J B.



Y1108 and power van at Boulder Loop Line Yard at old Boulder Station July 6th.

Photo Peter Donaghy



Q4014 on 7C74 lime shunter departing Parkeston for WEK July 6th.

Photo Peter Donaghy



BHPBIO SD70ACe 4328 one of an order for BNSF that was diverted to BHPBIO as urgently needed motive power in 2011, sits on fuel train at Port Hedland July 30th.

Photo Toad Montgomery



FMG SD70ACe 712 & 704 run empty ore train out of port to its yard July 21st. Photo Toad Montgomery



CBH007, CBH008, CBH009 & CBH003 at Watco service facility Mingenew July 6th. Photo Phil Melling



ACA6009 & ACA6012 on 7035 empty ore running thru Midland July 6th.

Photo Phil Melling



ACN4172 on 2873 alumina at Roelands July 8th.

Photo Simon Barber



DBZ2309 & DBZ2303 on 2595 coal at Worsley July 8th.

Photo Simon Barber



CFCLA CM40-8M ex Robe River 9425, CD4303 and CD4302 in UGL yard Bassendean 21/07. Photo Jim Bisdee



Shell of GM30 whose rebuild was cancelled being hauled to CD Dodd scrap yard in Forrestfield July 30th.



Shell of GM 30 in CD Dodd scrap yard awaiting scrapping July 30th.

Both photos Jim Bisdee



SCT015 & SCT007 on 5MP9 failed July 13th climbing Parkeston bank, now waiting relief Aurizon locomotive.



Relief engine Q4005 approaching failed 5MP9 SCT freight at edge of Brookfield territory in Kalgoorlie 13/7.



Relief engine Q4005 commencing to haul SCT 5MP9 towards West Kalgoorlie July 13th.



Q4005 then suffered computer problems in an effort to fix the problem Q4005 was shut down.



Q4005 failed to restart so AC4306 ran ex WEK to rescue Q4005 and 5MP9 at Kalgoorlie July 13th



AC4306, failed Q4005 & SCT007 with SCT014 on 5MP5 departs Kalgoorlie 13/07. All photos Peter Donaghy



Failed SCT015 with only SCT007 working hauls very late 5MP9 thru Hazelmere July 14th. Photo Jim Bisdee



6024 & 6028 on 6MP1 Aurizon intermodal Binduli July 7th.

Photo Peter Donaghy



Q4006 on 1C74 super sized Parkeston shunter in loop July 14th, as didn't run on 13th. Photo Peter Donaghy



CBH007 on Watco grain at Narngulu East passing crop of Canola July 27th.

Photo Phil Melling



BHPBio SD70ACes 4384, 4386 and 4392 stabled outside service shed Port Hedland July 30th.



SD70ACe 4374 with CM40-8M 5663 in arrival roads Port Hedland July 30th. Both photos Toad Montgomery



SD70ACe 4361 & CM40-8M 5667 haul loaded ore past salt settling ponds 21/7. Photo Toad Montgomery



DBZ2313, DBZ2306 & ACN4173 outside service shed Picton July 20th.

Photo Phil Melling



DD2358 & DD2359 on loaded alumina running thru Waterloo July 20th.

Photo Phil Melling



S3309 on loaded alumina to port at Bunbury suburb of Vittoria July 20th.

Photo Phil Melling



BHPBIO SD40R 3094 and 3097 in the shed at Bing flashbutt yard on July 20th. Photo Toad Montgomery



FMG CW44-9 012, SD70ACe 709 & SD9043MAC 905 at FMG port facility July 21st. Photo Toad Montgomery



FMG SD9043MAC near Great Northern Highway overpass Port Hedland July 21st. Photo Toad Montgomery



NR28 on 1PA8 Indian Pacific passes track machine TM500 at Midland July 21st.

Photo Jim Bisdee



SD40R 3093 & 3096 stabled on ballast wagons at Bing flashbutt yard July 21st. Photo Toad Montgomery



SD40R 3091 stabled on a CFCLA ballast wagon in Bing flashbutt yard July 20th. Photo Toad Montgomery



SD40R 3096 loaded ballast wagons 3078 on far track 3092 & 3093 flashbutt 20/7. Photo Toad Montgomery



P2511 on ballast train with track machines stabled in cripple road at Wagin 19/7.

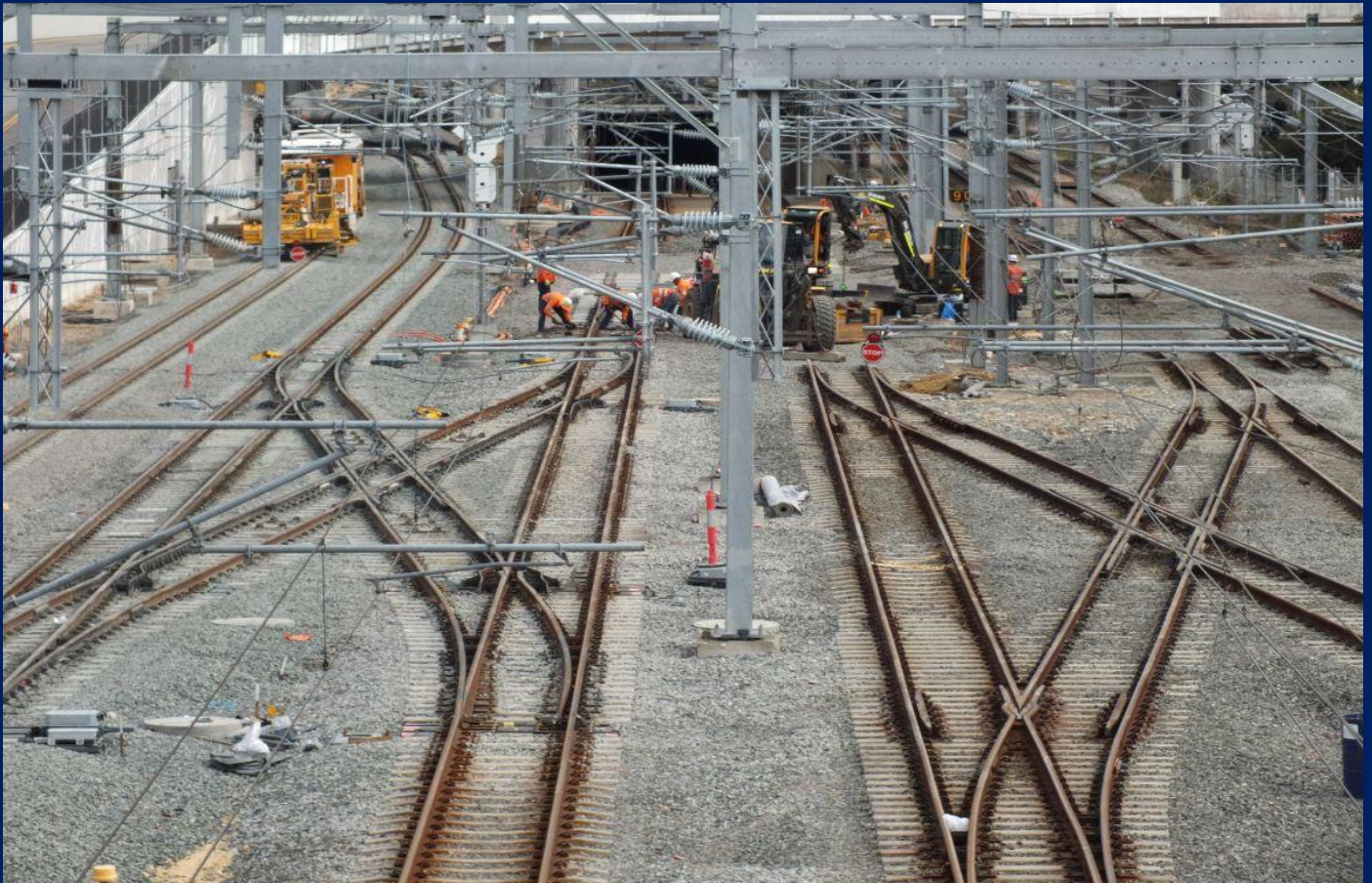
Photo Daryle Phillips



Perth Station was closed on weekend 12th 14th July here with work underway on platform 5.



Work underway on underpass connecting Perth and underground station July 14th. Both photos Jim Bisdee



Old Fremantle line disconnected on left, new line being connected on right July 14th.

Photo Jim Bisdee



Work being undertaken in the Fremantle line tunnel July 14th prior to opening.

Photo Jim Bisdee



U201 on 4RT1 rail train at Mundijong Junction July 10th.

Photo Simon Barber



S3309 on 4875 loaded alumina at Pinjarra South July 10th.

Photo Simon Barber



DBZ2309 & DBZ2307 on 4253 coal at Pinjarra South July 10th.

Photo Simon Barber



DC2205 & DC2213 on 6142 container train crossing Swan River Fremantle 19/7.

Photo Phil Melling



PA2819 on empty alumina at Pinjarra east July 9th.

Photo Jim Bisdee



DD2358 on empty caustic tankers to Picton at Pinjarra east July 9th.

Photo Jim Bisdee



B series EMU set #61 on Thornlie service approaching Queens Park July 12th.

Photo Jim Bisdee