

# West Australian Rails

Number 08

Free photo e-mag covering rail happenings July September 2013

Jim Bisdee publisher

email: [pm1225@bigpond.com](mailto:pm1225@bigpond.com)

Copyright Jim Bisdee © 2013



DFZ2403 & DFZ2401 on loaded Karara Mining ore from Perenjori out of Morawa 10/8. Photo Phil Melling

The first cars of an order of 24 new three car EMU sets, 095 were completed and hauled by rail from Maryborough Queensland to Perth Freight Terminal Kewdale then onto old workshops Midland where they were bogie exchanged and placed on their powered bogies. Watco ran to end of only Midwest tier3 grain line south of Perenjori to empty the CBH grain bins at Maya. Second shutdown of Fremantle line to allow further work on sinking the line and upgrading Perth Station took place on first four days of the month. Operation on AOPY cut down former Leigh Creek coal wagons continued with a dedicated 42 wagon fleet hauled by two L class units operating to and from Esperance.





DFZ2407, DFZ2404 & 2512 on 7720 empty Perenjori ore at Bringo with Geraldton city and Indian Ocean in the far distance with hill covered in canola August 3rd. Photo Phil Melling



ACN4171 turns on triangle at Narngulu East with further ACNs stabled August 3rd. Photo Phil Melling





LZ3107 on 7027 anhydrous ammonia takers to West Kalgoorlie to Malcolm 24/08. Photo Peter Donaghy



LZ3119, LZ3117 & Q4006 on 2443 Esperance freight, AOPY ore cars and tankers 5/8. Photo Peter Donaghy





L3118 & LZ3119 on 2421 empty ore departing Binduli 19/08, with 42 OPAY cut down ex Leigh Creek coal wagons, been stored, were returned to service to cover ore cars destroyed in May. Photo Peter Donaghy



Roy Hill line alignment, FMG line in background on Indee Station in Pilbara 15/8. Photo Toad Montgomery





Roy Hill line alignment on Indee Station in Pilbara looking south August 15th. Photo Toad Montgomery



Roy Hill line alignment on Indee Station in Pilbara looking north August 15th. Photo Toad Montgomery





Roy Hill line alignment, FMG line Indee Road level crossing in background 15/8. Photo Toad Montgomery



Cab of GM30 in D C Dodd scrap yard Forrestfield cab has been sold for preservation 3/8. Photo Jim Bisdee





DAZ1901 first Aurizon locomotive to cross Yelverton St Midland on 30/8 to enter old workshops for years.



Avonlink railcars wait on platform 1 Midland Station 30/8 for the run to Northam. Both photos Jim Bisdee





FMG 704 & 710 on short ore running north on Indee Station 15/8 after crossing from west to east track.



FMG 704 & 710 running on east track of now duplicated line 15/8.

Both photos Toad Montgomery





ACA6010 runs 5033 empty ore to Mt Walton thru Meenaar east Northam 15/8.

Photo Jim Bisdee



LZ3109 on 5474 run thru Wyola West east of Cunderdin in rain August 15th.

Photo Jim Bisdee





Q4009 on 7478 nickel train ex Leonora approaching Kalgoorlie August 24th.

Photo Peter Donaghy



Q4005, Q4001 & LZ3106 on 7C71 Parkeston shunter at West Kalgoorlie August 24th. Photo Peter Donaghy





NR1 on 2NP3 with EMU set 095 on rear at Wyola West August 15th.

Photo Jim Bisdee



EMU set 095 on rear 2NP3 steel train at Wyola West August 15th.

Photo Jim Bisdee





NR1 on 2NP3 steel train entering Grass Valley to cross 5PM5 in loop August 15th.

Photo Jim Bisdee



EMU set 095 on rear on 2NP3 steel train at Grass Valley August 15th.

Photo Jim Bisdee





NR47 & NR.. on 5PM5 crosses 2NP3 in loop Grass Valley with CBH121 stabled 15/8.

Photo Jim Bisdee



Rake of FMG side dump cars stabled in Barker Siding ballast road August 15th.

Photo Toad Montgomery





SCT003 & SCT on 6PM9 with two crew cars, departing Wet Kalgoorlie August 10th. Photo Peter Donaghy



Q4009, LZ3112. LZ3117 dead attached AC4304 on 4426 freight to Forrestfield 14/8. Photo Peter Donaghy



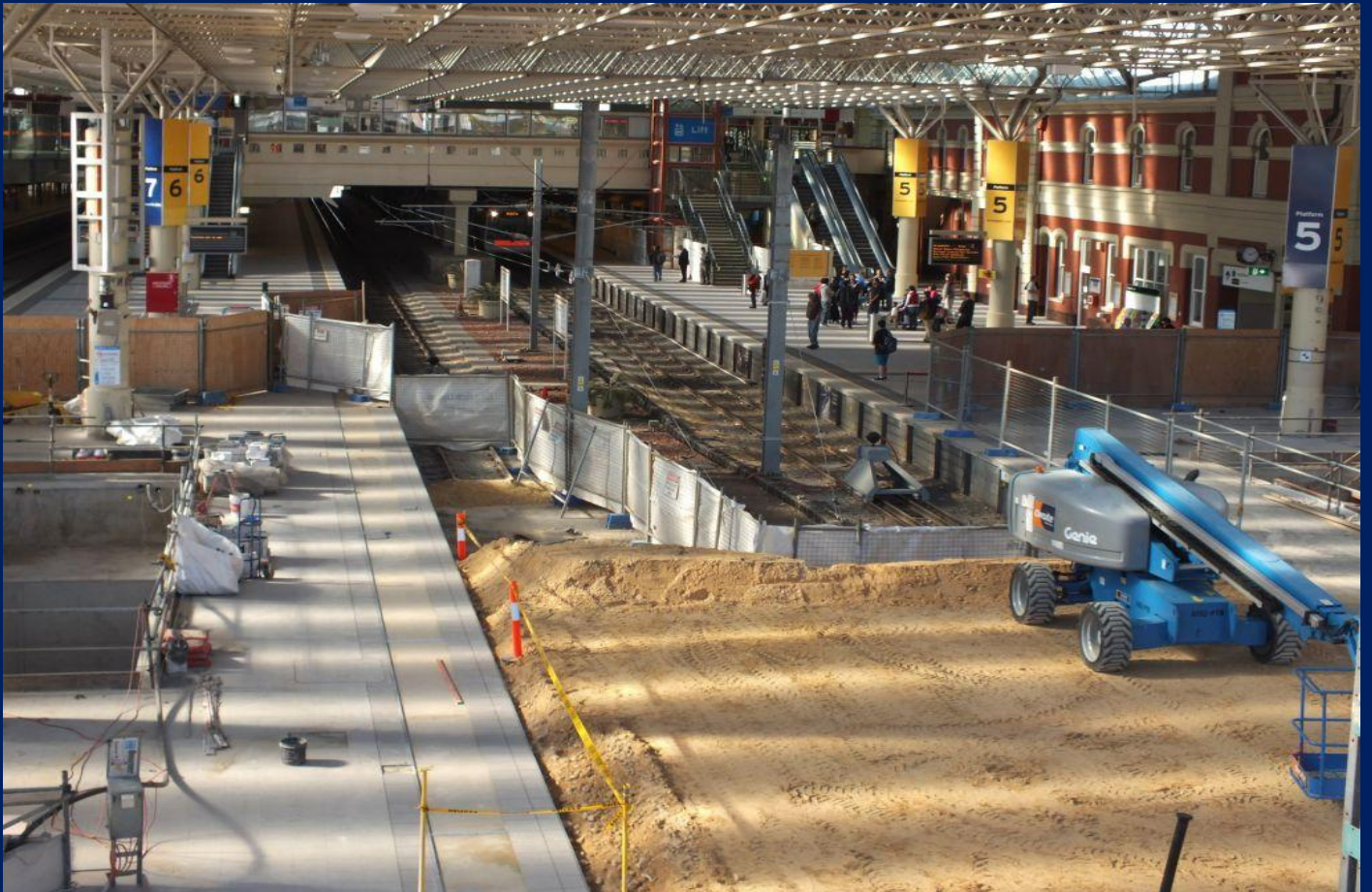


CBH007 climbs last grade before reaching Bunjil on Tier3 line south of Perenjori 24/8. Photo Phil Melling



CBH008 & CBH007 run round at end of Tier3 line at Maya on Watcos first run there 10/8. Photo Phil Melling





Platform 6 and 5 at Perth Station still in use, while works continue August 4th.

Both photos Jim Bisdee



Platform 11 and Fremantle line track removed with work underway on platform 6 tunnel connection 4/8.





Fremantle line tunnel connection to Platform 6 under construction August 4th.

Photo Jim Bisdee



Old Fremantle line alignment looking back toward old platform 11 and bus station 4/8.

Photo Jim Bisdee





CBH007 passing old Caron concrete coal stage south of Perenjori August 24th.

Photo Phil Melling



CBH007 & CBH008 just south of Latham on only Midwest Tier3 line to Maya 10/8.

Photo Phil Melling





DFZ2405, DFZ2401 & DFZ2402 on loaded Karara Mining ore ex Perenjori passing canola at Narngulu 3/8.



DFZ2407, DFZ2404 & 2512 on empty ore rounding curve south end Narngulu 3/8. Both photos Phil Melling





8118 on 6P31 empty railcar movement at Hazelmere August 16th.

Photo Simon Barber



EMU car 4095 is propelled past block of home units in what was Midland workshops yard 16/8. Photo Jim B





8118 propelling EMU set 095 into 6 road old workshops last one connected 16/8.

Photo Jim Bisdee



8118 propels wagons of bogies for EMU set 095 into old workshop yard 16/8.

Photo Jim Bisdee





P2508 runs 5283 empty wagon transfer Forrestfield to Avon Yard at Woodbridge 1/8. Photo Jim Bisdee



EMU set 095 power bogies being propelled to old workshops past new apartment site 16/8. Photo Jim B





8118 on Sadleir vans and NR68, NR47 dead NR35 on 7PM5 at PFT Kewdale waiting to depart 3/8.



Long ends of CD4303, CD4302 and P2516 stabled at UGL Bassendean August 4th. Both photos Jim Bisdee



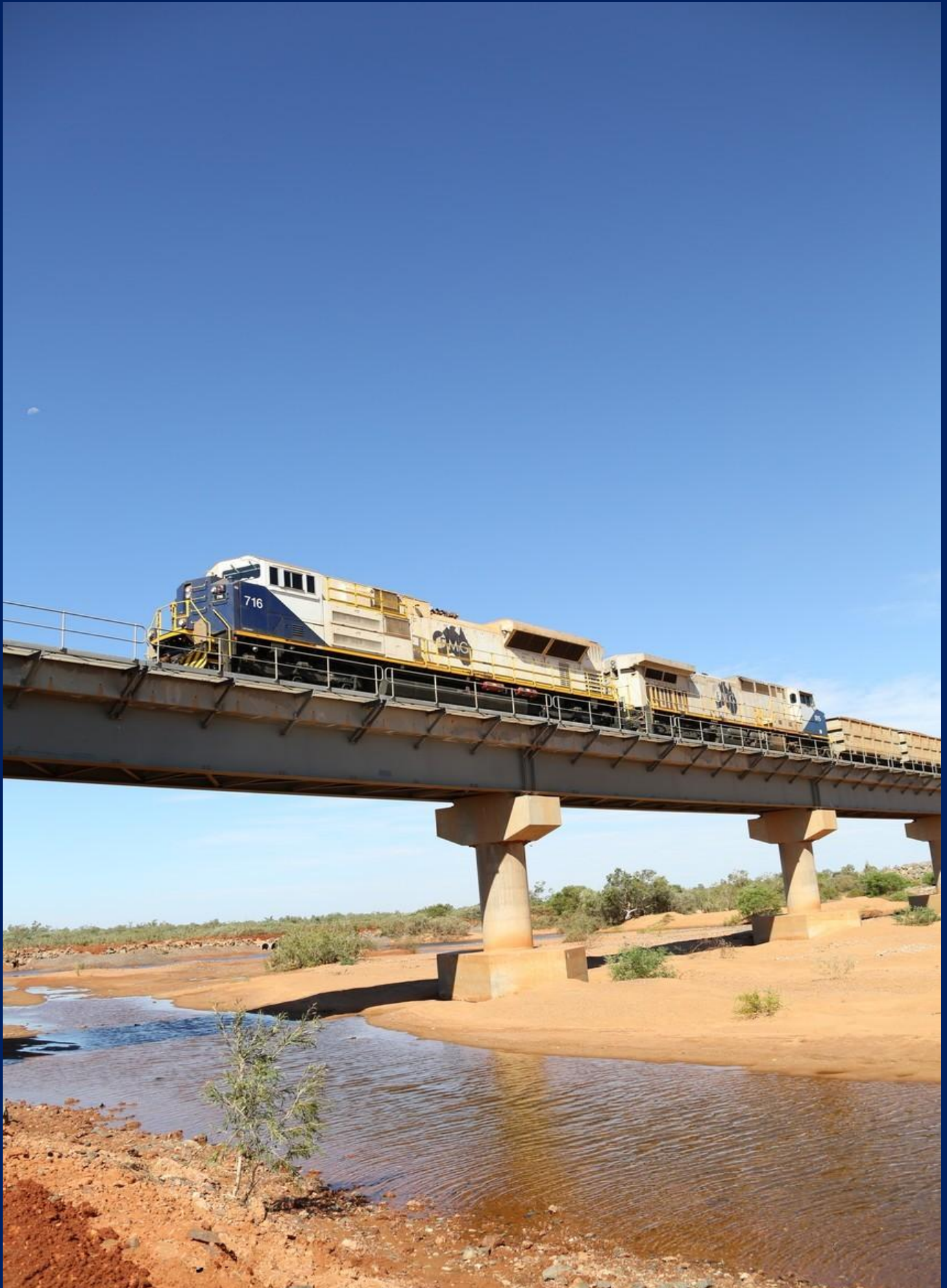


8118 on 4P31 shunter with three flattops of EMU s n/g transfer bogies at old Midland workshops 28/8.



8118 departing Midland for PTF Kewdale transfer bogies to return to Qld 28/8. Both photos Simon Barber





FMG SD70ACe 716 leads CW44-9W 015 on ore train over Turner River 16/8.

Photo Toad Montgomery

END page 25 of 25