

West Australian Rails

NUMBER....01-01

SPECIAL EDITION COVERING LOADING, TRANSPORT and EXPORT of obsolete Aurizon locomotives from Forrestfield to Fremantle

ALL PHOTOGRAPHS by Jim Bisdee

Publisher: Jim Bisdee

E-Mail: pm1225@bigpond.com

Copyright Jim Bisdee © 2015



42211 is hauled out of loading point in loco ladder Forrestfield to be hauled to Fremantle Port 04/01.

Aurizon sold a number of redundant and obsolete locomotives that had been stored for some time in Forrestfield yard to Apex Industrial in South Africa. Unusually this locomotive export contained both narrow 1067mm and standard 1435mm gauge locomotives that were exported to South Africa that only has 1067mm lines. These locomotives with some previously from Queensland, New South Wales and South Australia that had seen service with ARG or were imported from Queensland by QR National following purchase of ARG. There were also some ex WAGR/Westrail locomotives that had reached the end of their economic lives. Exported were A1202, AB1501 & AB1502, AD1520 & AD1521, D1562, DAZ1902-DAZ1906, DD2355-DD2359, DE1251, NJ1602 & NJ1605. Standrad gauge; 2201, 2203, 42211 & DC2215.



42111 being lifted onto transport float at Forrestfield for export January 4th.



DC2215 being lifted onto transport float at Forrestfield on January 4th.



DC2215 heading out of loading site with 42211 to follow as they head to Fremantle port on January 4th.



2203 on transport float in parking lot waiting for further locomotive to be loaded January 4th.



2201 being lifted onto transport float at Forrestfield January 4th.



2201 being hauled out of loading site ready to depart for Fremantle port on January 4th.



2201 with 2203 behind it departing Forrestfield for Fremantle port January 4th.



2203 about to turn onto Abernathy Road on way to Fremantle port January 4th.



2201 & 2203 departing Forrestfield on heavy haul route to Fremantle port January 4th.



A1501 loaded waiting at Forrestfield to depart for Fremantle port January 5th.



AB1501 on transport float at Forrestfield January 5th.



NJ1605 being hauled out of hardstand loading area Forrestfield on January 5th.



NJ1605 about to turn onto heavy haul route to Fremantle port with AB1501 following January 5th.



NJ1605 & AB1501 departing Forrestfield on heavy haul route to Fremantle port on January 5th.



DE1251 crossing Stirling Bridge at Fremantle, note all traffic held by escort vehicles 5/1.



DE1251 being hauled over empty an Stirling Bridge at Fremantle January 5th.



DD2358 loaded waiting at Forrestfield to go to Fremantle port January 5th.



DD2358 on transport float at Forrestfield January 5th.



AB1502 waiting to head to Fremantle port January 6th.



DD2359 on transport float parked up waiting for another locomotive to be loaded as run in twos 6/1.



DD2357 being hauled out of hardstand area on January 6th.



DD2359 & DD2357 departing Forrestfield on way to Fremantle port on January 6th.



DAZ1902 about to enter parking lot where they are held till leave for Fremantle port on January 6th.



DAZ1904 being hauled out of hardstand to join DAZ1902 on January 6th.



DAZ1904 & DAZ1902 parked side by side waiting to go to Fremantle port January 6th.



AD1520 being hauled out of the hardstand area to parking lot before going to Fremantle port on January 6th.



AD1521 being hauled out the hardstand area to join locomotives already in parking lot at Forrestfield 6/1.



DAZ1904, DAZ1902, AD1520 & AD1521 parked up at Forrestfield waiting to go to Fremantle port 6/1.



DAZ1903 being hauled from hardstand to parking lot Forrestfield January on 6th.



DAZ1903, AD1521, AD1520, DAZ1902 & DAZ1904 lined up in parking lot at Forrestfield January 6th.



DD2355 departing Forrestfield for Fremantle port note heavy lift cranes in hardstand January 7th.



DD2356 coming out of loading area at Forrestfield January 7th.



DD2356 departing Forrestfield en-route to Fremantle port for export on January on 7th.



D1562 being hauled out hardstand area at Forrestfield January on 7th.



D1562 on transport float at Forrestfield January 7th.



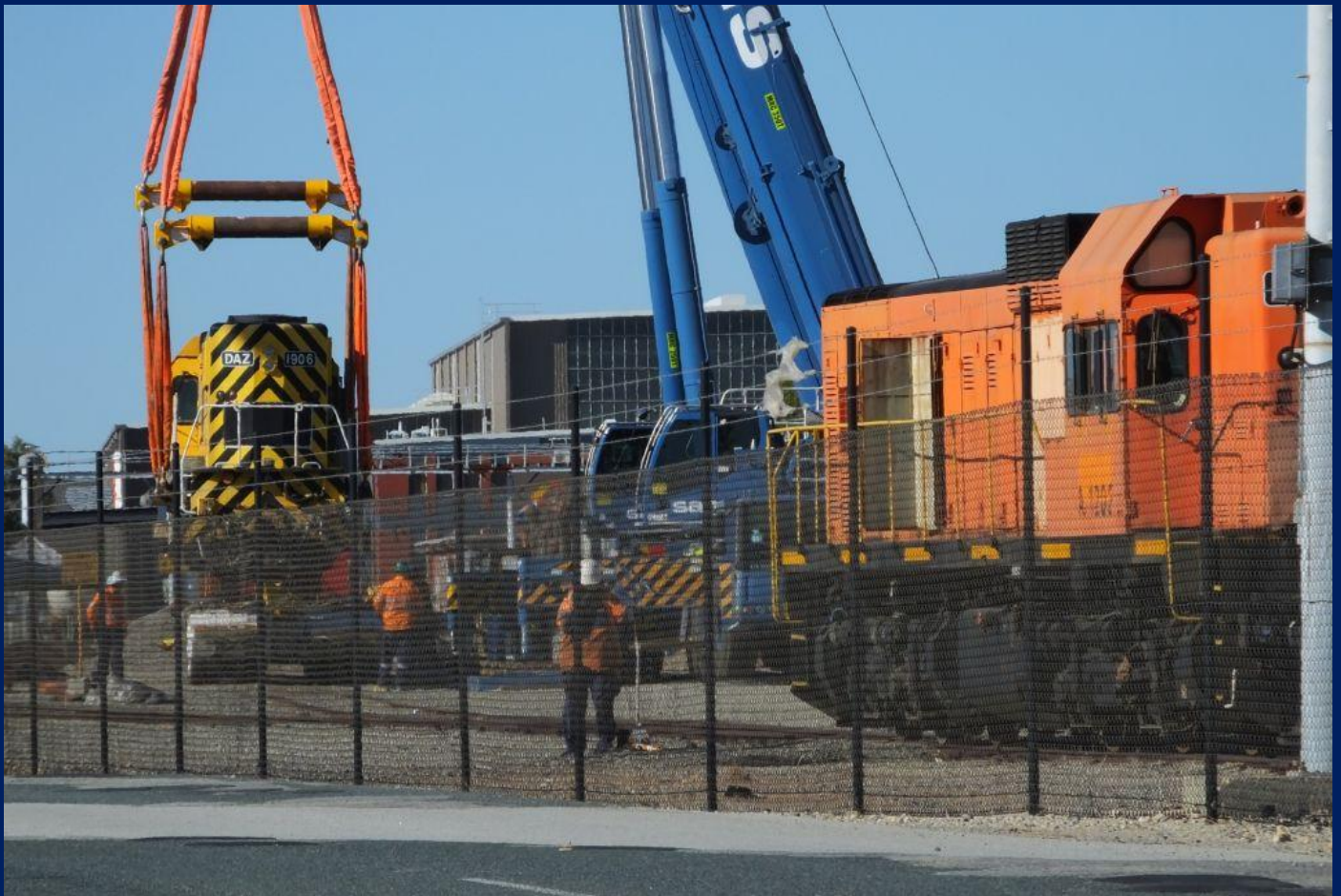
NJ1602 being pushed by shunting tractor into position for loading at narrow gauge loco January 7th.



DAZ1905 on way to parking area Forrestfield January on 7th.



NJ1602 & DAZ1905 on transport floats parked at Forrestfield on January 7th.



A1202 next to be loaded waits to enter loading area where DAZ1906 is being loaded onto transport float 7/1.



Shunting tractor pushing A1202 to hardstand January 7th it will be last locomotive to be lifted on 8/1.



DAZ1906 after loading being hauled out of hardstand to the parking lot at Forrestfield on January 7th.



DAZ1904 on Tonkin Highway Bridge as crosses over Abernathy Road on way to Fremantle port on 8/1.



A1202 final locomotive to leave Forrestfield for export crossing Tonkin Highway bridge January 8th.



DAZ1902 & A1202 on Leach Highway being hauled up the hill in Palmyra on the way to Fremantle 8/1.



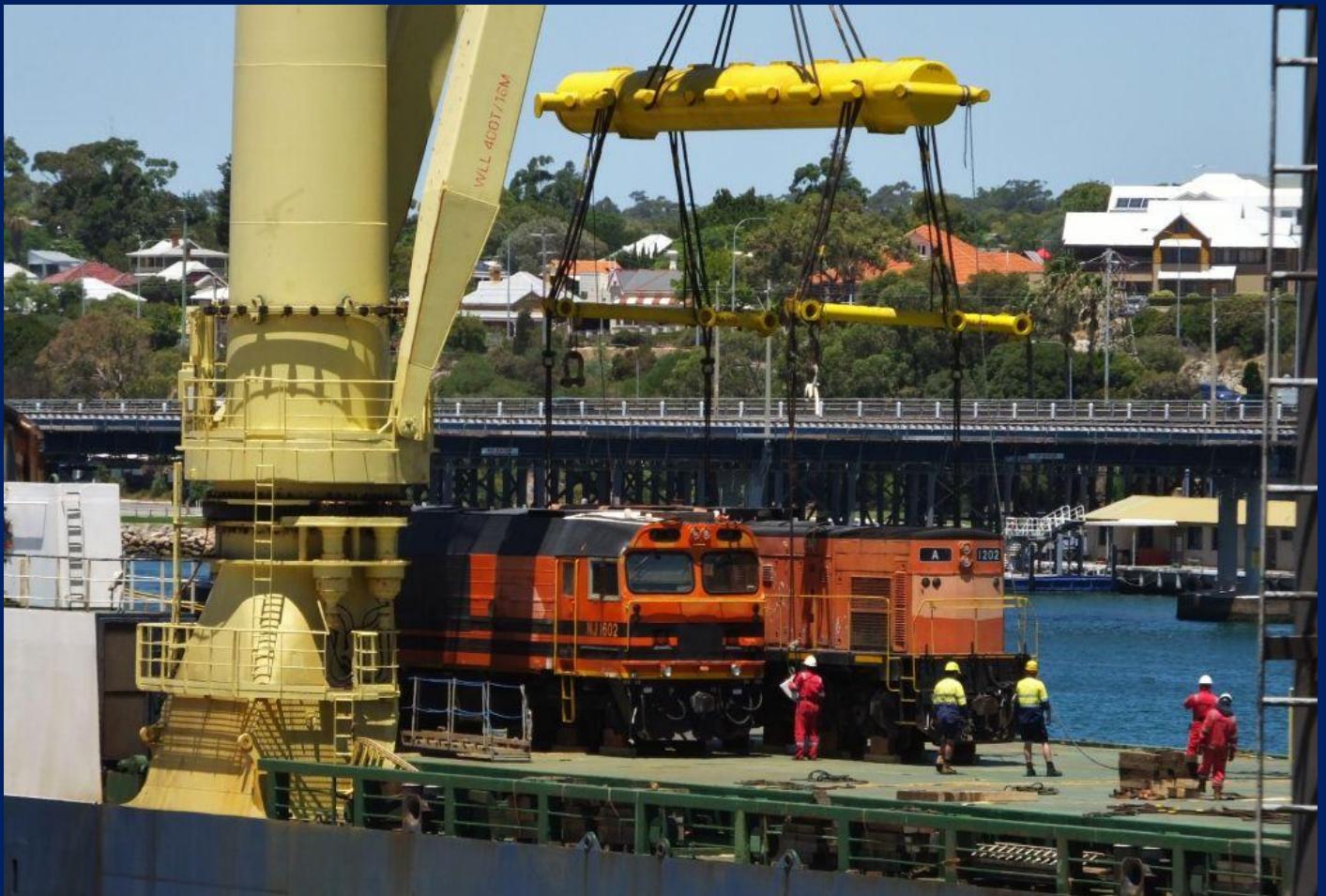
A1202 being hauled up hill at Palmyra with escort vehicles holding traffic behind these large loads 8/1.



DAZ1905 nearing top of grade on Leach Highway Palmyra on January 8th.



A1202 & DAZ1905 nearing the crest of hill at Palmyra January 8th.



A1202 being lowered onto deck and will travel as deck cargo as will all locomotives left to load 8/1.



MV Fairlift with NJ1602 as deck cargo and A1202 being lowered alongside it at #11 North Wharf on 8/1.



D1562 being swung on board MV Fairlift at #11 berth North Wharf Fremantle port January 8th.



D1562 being moved into position on the deck next to A1202 on January 8th.



DC2205 & DC2213 haul 5144 container train over Fremantle Railway Bridge with DAZ1906 on wharf 8/1.



DAZ1906 being hoisted on board MV Fairlift as deck cargo on January 8th.



DAZ1905 on transport float with DAZ1906 above it being lowered onto MV Fairlift deck cargo 8/1.



DD2355 & DAZ1905 on the wharf with DAZ1906 being lowered into position on the deck on 8/1.



DAZ1905 being hoisted onboard MV Fairlift at #11 North Wharf January 8th.



DD2355 being hoisted on board MV Fairlift at North Wharf on January 8th.



DD2356 the final locomotive hoisted on board MV Fairlift at #11 North Wharf January 8th.



DD2356 being lowered into position on deck of MV Fairlift at #11 North Wharf on January 8th.



Locomotives as deck cargo on MV Fairlift awaiting chaining down and securing for voyage to South Africa.



Both photos; MV Fairlift with all its cargo loaded at #11 North Wharf January 8th.





All deck cargo secured for long voyage to South Africa as MV Fairlift prepares to depart January 10th.



Deck cargo on MV Fairlift at #11 North Wharf secured ready to depart January 10th.



MV Fairlift coming out of Fremantle Harbour on January 10th.



MV Fairlift departing Fremantle Harbour at start of its long journey to Durban in South Africa on 10/1.



MV Fairlift at Fremantle Harbour entrance on January 10th.



MV Fairlift about to turn north into Gage Roads on January 10th.



MV Fairlift heading north before heading west and destination Durban South Africa on January 10th.