

West Australian Rails

NUMBER...09 A free monthly railroad e-Mag of railway photos in WA during September

Publisher: Jim Bisdee

E-mail: pm1225@bigpond.com

Copyright Jim Bisdee © 2015



U201 and ADQ121 stabled at Claisebrook Railcar Depot on evening September 4th.

Photo Jim Bisdee

The second weekly Indian Pacific service to cover the West Australian Wildflower season commenced with arrival of 1AP8 behind NR27 on September 1st. U201 continued to haul Australind cars to Nowergup for attention early hours of Saturday morning. Q4001 its overhaul completed ran a works trial to Kwinana and return on 8th. U201 hauled MA1862 ex PTA shunter and transfer locomotive from Claisebrook to Pinjarra following the sale by tender of the MA to Hotham Valley Railway. The HVR have commenced repairs on the MA1862 with view to using it on their Etmilyn services. SCT withdrew H2 shunting locomotive on 8th, joining already stored H5 out of service. Extensive wrong line running and train order working took place from 11th to cover re-railing programme on up main in various sections Avon Yard to Toodyay West, then Toodyay West Moondyne, Moondyne Jumperkine during most of the rest of the month. Roy Hill commenced running test trains mid month. MRL locomotives continue to be hauled to Spotswood for attention. MRL001 failed resulting in NR19 & NR79 running 2034 Polaris ore on 15th. K208 stored by SCT 28th. ACA6005 converted back to 6000 and returned to intermodal service on 3PM1 on 30th.



Former PTA transfer locomotive stabled out of service at Claisebrook RDC September 1st. Photo Jim Bisdee



CBH008 & CBH007 on 7K24 Watco grain at Bellevue September 5th.

Photo Jim Bisdee



CBH013 & CBH014 on empty Watco grain on main line passing thru Kewdale 9/9.

Photo Mark Bennett



LZ3117 on 4SG4 shunter with tankers from BP Kewdale on North Service West 9/9. Photo Mark Bennett



ACA6005, ACA6002, dead attached Q4003 & Q4009 on 2426 freight WEK yard 21/9. Photo Peter Donaghy



SD70ACe 4464 on un-braked ballast car & 4389 Flashbutt to Hedland yard 22/9. Photo Toad Montgomery



NR63 & NR109 on 1MP5 intermodal at Middle Swan September 4th.

Phot Simon Barber



LZ3106 on 2BT2 empty ballast at Bellevue September 7th.

Photo Simon Barber



CSR005 on 1142 ILS intermodal to North Port at Kewdale September 6th.

Photo Simon Barber



Q4009 on 4197 Soundcem shunter about to enter Forreestfield Yards September 9th. Photo Mark Bennett



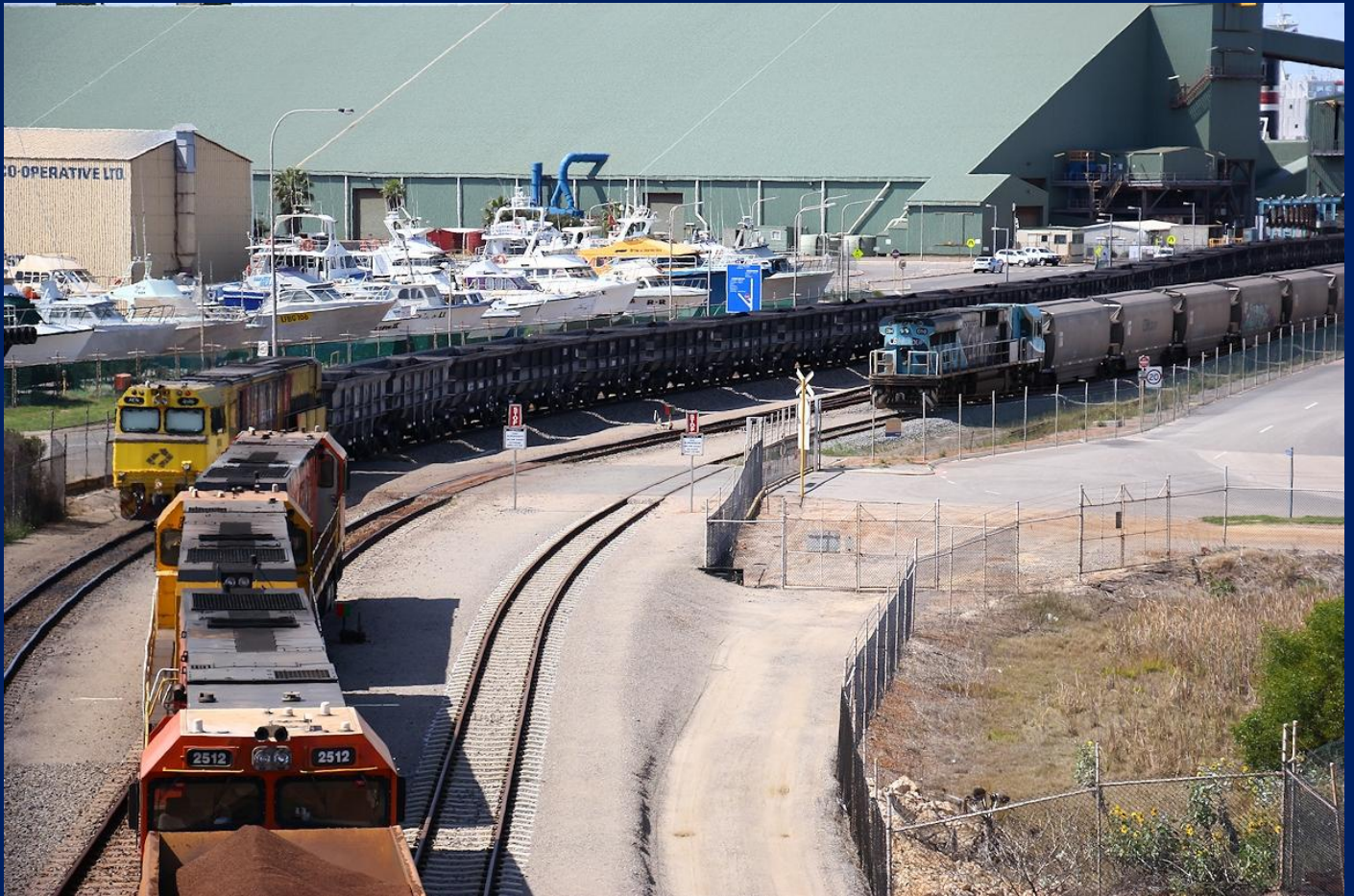
CBH004 & CBH012 on empty grain running thru on main line September 9th.

Photo Mark Bennett



P2508, P2505 & P2513 on 3720 empty Mt Gibson ore East Narngulu September 1st.

Photo Phil Melling



A loaded Mt Gibson ore arrives at Port of Geraldton with Karara and Watco trains unloading September 4th

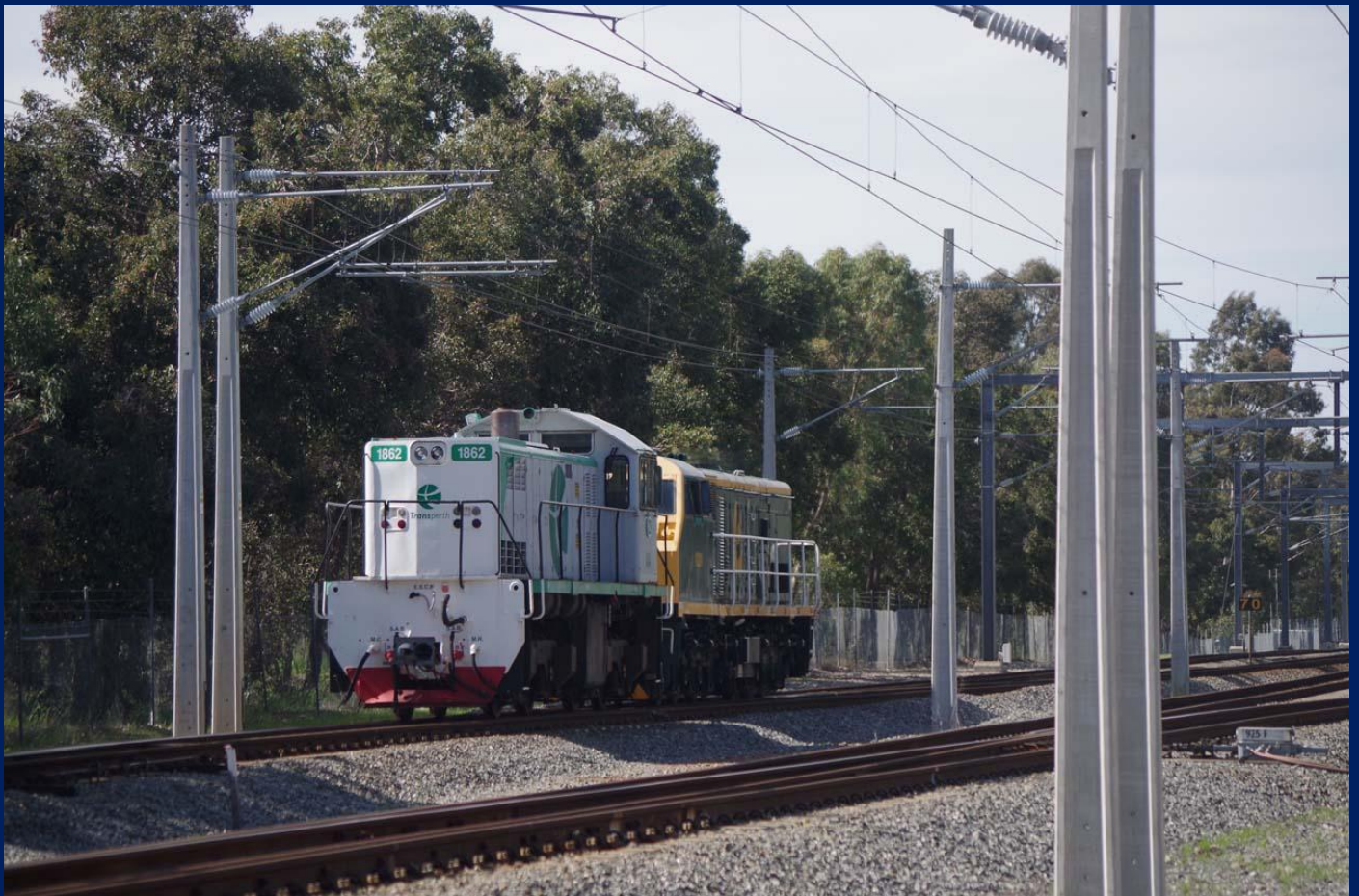


P2514, P2504 & P2505 on Mt Gibson ore at Northern Gully after sun set 17/9.

Both photos Phil Melling



U201 hauling MA1862 on 4PL3 light engine movement to deliver the MA to the HVTR September 9th.



U201 hauling MA1862 on 4PL3 light engine at Beckenham on September 9th. Both photos Simon Barber



LZ3109 on 4BT1 ballast at Swan View on September 9th.

Photo Simon Barber



Q4001 & Q4015 on 1C73 light engine Parkeston shunter departing Kalgoorlie 13/9.

Photo Peter Donaghy



P2515, P2513 & P2508 on 1720 empty Mt Gibson iron ore climbing thru Bringo 13/9. Photo Phil Melling



P2514, P2503 & P2505 on 7725 Mt Gibson ore passing crop spraying planes Indarra 12/9. Photo Phil Melling



NR10, NR98 & MRL003 on 2MP5 intermodal entering Kalgoorlie September 23rd. Photo Peter Donaghy



NR10, NR98 & MRL003 on 2MP5 intermodal about to enter Kalgoorlie 23/9. Photo Peter Donaghy



P2515, P2506 & P2504 on 6755 light engine Forrestfield to Narngulu South Guildford 4/9. Photo Jim Bisdee



NR29 yard shunter stabled Kewdale being passed by engine turn MRL006 leading 4/9. Photo Jim Bisdee



P2515, P2504 & P2514 on 7725 ore crossing Greenough River at Eradu September 19th. Photo Phil Melling



ACN4141 & ACN4152 on 1762 empty Karara ore heading to Tilley Junction and mine with disused Mullewa Pindar line level crossing in the foreground at Mullewa September 20th. Photo Phil Melling



NR117 on 3003 empty Indian Pacific cars East Perth to Kewdale at Woodbridge 8/9.

Photo Jim Bisdee



U201 hauls MA1862 on 4PL3 light engine at Keysbrook September 9th.

Photo Jim Bisdee



NR63, NR48 & hauling dead MRL006 interstate for work on 1PM5 at Swan View 13/9. Photo Simon Barber



6026, Q4017 & failed 6025 on late 3MP1 Aurizon intermodal at Middle Swan 18/9. Photo Simon Barber



Q4001 on 2426 Kwinana shunter at Wattle Grove September 15th.

Both photos Jim Bisdee



DAZ1901 hauls B series EMU set 109 past what will be an apartment block in old workshops yard Midland



Q4002, Q4013 & Q4014 on 1405 empty acid rake West Kalgoorlie to Hampton 20/9. Photo Peter Donaghy



Q4015, Q4009, Q 4017 & Q4013 on 7C71 Parkeston shunter West Kalgoorlie 26/9. Photo Peter Donaghy



CBH004 & CBH010 on 7G50 empty Watco grain Mingenew passing thru Bootenal 19/9. Photo Phil Melling



ACN4170 & ACN4171 on 2763 loaded Karara ore into Narngulu September 28th.

Photo Phil Melling



6026, Q4017 & 6025 on late 3MP1 Aurizon intermodal South Guildford September 18th. Photo Jim Bisdee



8121 propels new EMU set 110 into old workshops past new construction site 18/9.

Photo Jim Bisdee



8121 on 6P31 hauling B series EMU set 110 approaching Woodbridge Junction 18/9. Photo Simon Barber



NR28 on 1PA8 Indian Pacific passing old Gemco compound Bellevue September 20th. Photo Simon Barber



NR79 & MRL002 on 1033 empty Polaris ore to Mt Walton at South Guildford 20/9.

Photo Jim Bisdee



U201 on 9991 hauling Australind car ADP101 past Bassendean siding September 21st.

Photo Jim Bisdee



NR116, NR63 dead MRL006 returning to WA on 6MP5 Middle Swan September 21st. Photo Simon Barber



8121 on 6P32 standard gauge transfer bogies ex EMU set to Kewdale at Midland 25/9. Photo Simon Barber



Q4003 on 3196 container train to North Port crossing Swan River on Fremantle Rail Bridge 22/9.



LZ3106 on 5197 Soundcem shunter with North Port loading at Kenwick 24/9.

Both photos Jim Bisdee



CBH004, CBH011 & CBH011 on 7K54 Watco grain at Millendon September 26th.

Photo Simon Barber



6024 & 6025 on 7PM1 Aurizon intermodal at Millendon September 26th.

Photo Simon Barber



NR11 & MRL005 on 1035 empty Polaris ore at Woodbridge September 27th.

Photo Jim Bisdee



AC4301 & Q4011 on 1025 departing Forresterfield after sundown on September 27th.

Photo Jim Bisdee



NR79 & NR79 on late 2034 Polaris ore [MRL001 failed NR79 replaced it] at Thornlie 15/9. Photo Jim Bisdee
