

# West Australian Rails

NUMBER 4 A free monthly photo e-Mag of railway happenings in WA during April 2020

PUBLISHER Peter Donaghy

Email: [peterdonaghy2@bigpond.com](mailto:peterdonaghy2@bigpond.com)

Copyright: Peter Donaghy © 2020



MRL005, CF4405 & MRL001 skirt the shore of Lake Cowan with 4030 empty ore, 5<sup>th</sup> February. Photo: Phillip Martin

The anticipated shortfall in April photos didn't eventuate; some amazing loco combinations late in the month (particularly over the Anzac Day long weekend – see part 2) brought the photographers out, and a few semi-regulars also dusted off their cameras (appreciated, guys!). Excellent news is that we now have a contributor in Esperance so hopefully we will start seeing regular coverage from that region (thanks, Phillip – no pressure!).

PN have reintroduced (yet again) in-line fuelling on some services, mostly MP5.

PN are now running DPU services on Kooly ore, as well as those run by Aurizon. Again, anyone's locos can turn up on anything. NRs in ore traffic dwindled to one by early April, with NR44 being PN's only contribution to the shared pool for nearly a month, before it was removed and returned to Intermodal. As NR44 was being handed back, MRL006 failed, so Ghan NR109 was removed from the empty fuel train and sent to the rescue. NR109 then spent the next week or two in ore traffic before NRs 108, 8 and 2 replaced it. Another failure days later saw NR101 removed from an intermodal at West Kal and sent south; NR2 returned to Intermodal soon after.

In early May, 1MP2 delivered CF4407 & CF4408 to West Kalgoorlie; they were hauled to Esperance two nights later on the empty fuel train and have since joined the ore fleet.

AC4302 returned to traffic in early May after two and a quarter years out of traffic. Days later it joined the Esperance ore pool.

VLs 357 & 361 have finished their hire to Watco and have now been signed up by Aurizon supposedly for Leonora line traffic, to release a pair of Qs. As of mid May, they are at Kwinana, awaiting transfer to West Kalgoorlie.





NR95 stands in Viva's fuel yard at Esperance, mid February – NR47 in the background. Photo: Phillip Martin



ACB4402 & Q4009 shuttle 1157 fuel/workshop transfer through Kenwick, 16<sup>th</sup> February. Photo: Mitchell Radford





G511, CBH122, VL357 & CBH119, 2S58 loaded grain from Avon Yard, Toodyay West, 24/2.



DBZs 2301, 2302 & 2305, 3K44 loaded grain ex Cadoux, Koomburkine, 25<sup>th</sup> Feb. Both photos: Sean McGarraghy





CBHs 024 & 003, DBZ2305 & CBHs 008, 025 & 007 await their next duty at CBH Kwinana, 7<sup>th</sup> March.



ACC6031 shunts sulphuric acid tanks at Kwinana, 14<sup>th</sup> March.

Both photos: Mitchell Radford





Q4003, MRL003 & ACB4402 on BP & maintenance shuttle, Wattle Grove, 29<sup>th</sup> March. Photo: Sean McGarraghy



Rear DPU unloading Karara ore, ACN4171 passes DRs 1565 & 1564 on a rail rake, Geraldton, 1/4. Photo: Phil Melling





Ps 2514, 2505 & 2506 unload 6721 Mt Gibson ore to form 6722, Geraldton Port, 3<sup>rd</sup> April.

Photo: Phil Melling



Aurizon's 7041 enters Binduli behind NR44, CF4406 & MRL005 – note no Aurizon loco, 4/4.

Photo: Peter Donaghy





NR44 (at that time the only MinRes NR), CF4406 & MRL005, 7041 ore, Binduli, 4<sup>th</sup> April. Photo: Peter Donaghy



Aurizon's 7044 approaches Binduli behind ACB4404 & AC4308, 4<sup>th</sup> April.

Photo: Peter Donaghy





DP locos ACC6032 & AC4304 on 7044 ore, Binduli, 4<sup>th</sup> April.

Photo: Peter Donaghy



Ps 2506, 2504, 2502 & 2508 haul 6723 loaded Mt Gibson ore through Bringa, 4<sup>th</sup> April.

Photo: Phil Melling





NRs 109 & 51 lead AN2 on 6MP1 (additional COVID service) through Herne Hill, 5<sup>th</sup> April. Photo: Mitchell Radford



FMG's SD70ACe/LCi 718 leads C44-9W 010 and an empty rake out of the port, 9<sup>th</sup> April. Photo: Pilbara Railways





Re-engined SD90MAC 901, Anderson Point with compressor sets 4, 1 & 8, 9<sup>th</sup> April.    Both photos: Pilbara Railways



FMG loaded ore waits outside Kanyirri Yard behind new SD70ACe 727 and old SD70ACe/LCi 706, 9<sup>th</sup> April.





Brand new 730 leads 717 to Kanyirri Yard for servicing, 10<sup>th</sup> April.

Both photos: Pilbara Railways



730 is ninth of a 10-unit order; standard US domestic locos on HTCR-4 bogies rather than the low clearance version.





A loaded FMG ore rounds the 5km curve behind 718 and 010, 10<sup>th</sup> April.

Both photos: Pilbara Railways



New SD70ACe 725 and former 6000hp SD90MAC 902 run to port to collect an empty train, 10<sup>th</sup> April.





705 with BHP-style handrails & 713 accelerate an empty rake away from port, 10/4. Both photos: Pilbara Railways



Originally 6000hp but repowered locally to 4300hp, 902 leads new 725 away from port with empties, 10<sup>th</sup> April.





Tatty GE C44-9W 005 and SD9043MAC 907 await a slot through the unloaders, 10/4. Both photos: Pilbara Railways



Another re-powered unit, 903 waits with 905 on the loaded fuel train, 10<sup>th</sup> April.





903 & 905 on FMG's loaded 24-tank fuel train, 10<sup>th</sup> April.

Photo: Pilbara Railways



After running 7C71 Parkeston shuttle, Q4006 and MRL003 return to West Kal as 7C72, 11/4. Photo: Peter Donaghy





009 & 719 with a loaded iron ore on the 5km curve as a road train of iron ore crosses the bridge, 12<sup>th</sup> April.



901 shunts four compressor sets at the port, 12<sup>th</sup> April.

Both photos: Pilbara Railways





CBH122 eases 1S56 West Merredin – Kwinana grain through Millendon Junction, 12/4.

Photo: Graham Saunders



New ore hoppers trail 721 & 004, 12<sup>th</sup> April.

Photo: Pilbara Railways





FMG's new CRRC Yangtze wagon pair - 9011 slave and 10012 control – loaded with fines, 12<sup>th</sup> April.



As a loaded rake arrives at the port, 709 & 007 depart with an empty rake, 12/4.

Both photos: Pilbara Railways





Large-numbered NR55 leads NR70 through Millendon Junction on 5MP2, 12<sup>th</sup> April.

Photo: Graham Saunders



713 & 705 depart the port with another empty rake, 12<sup>th</sup> April.

Photo: Pilbara Railways





NRs 55 & 79 entering Forrestfield with 5MP2, 12<sup>th</sup> April.

Photo: Graham Saunders



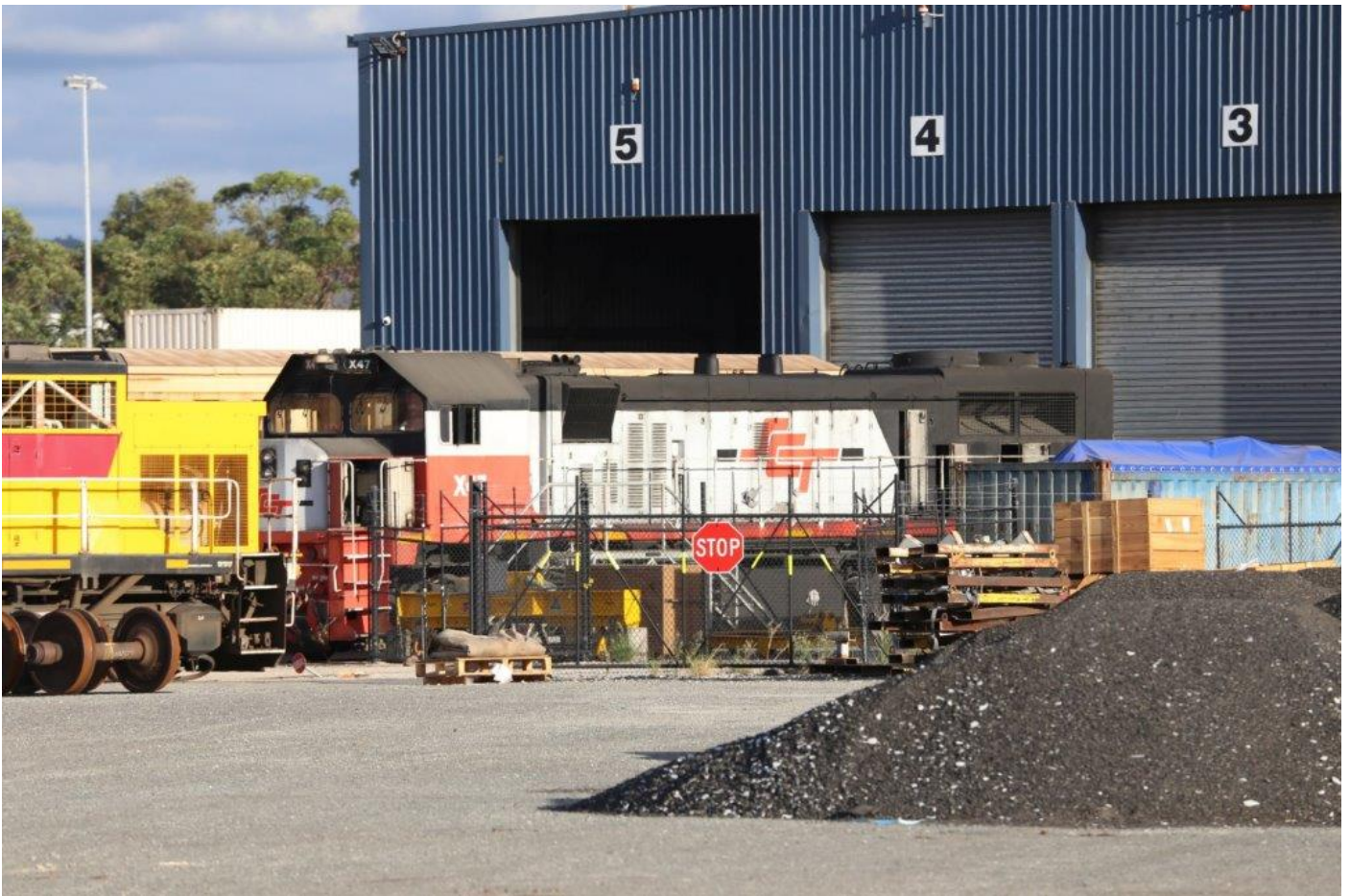
Third empty of the afternoon departs port behind 015 (handrail mods) & new 723, 12/5.

Photo: Pilbara Railways





Fresh S3306 and stripped Q4012 outside Gemco Rail, Forrestfield, 12<sup>th</sup> April.



Failed X47 and Q4012 stripped for overhaul outside Gemco Forrestfield, 12<sup>th</sup> April. Both photos: Graham Saunders  
Page 21 of 31





The shell of Q4012, stripped for overhaul, Gemco Forrestfield, 12<sup>th</sup> April.



The driving cab module removed from Q4012, Gemco Forrestfield, 12<sup>th</sup> April.      Both photos: Graham Saunders





013 and new 726 bring a loaded ore around the 5km curve, 12<sup>th</sup> April.

Both photos: Pilbara Railways



Slave 7687 and control 8688 painted by South Hedland High School students in Aug 2018, photographed 12/4.





Slave 5103 (CRRC Yangtse) and control 6104 (CNR QRRS) mismatch pair, 12<sup>th</sup> April.

Photo: Pilbara Railways



1PM5 prepares to depart Kewdale behind NRs 19 & 100, 12<sup>th</sup> April.

Photo: Graham Saunders





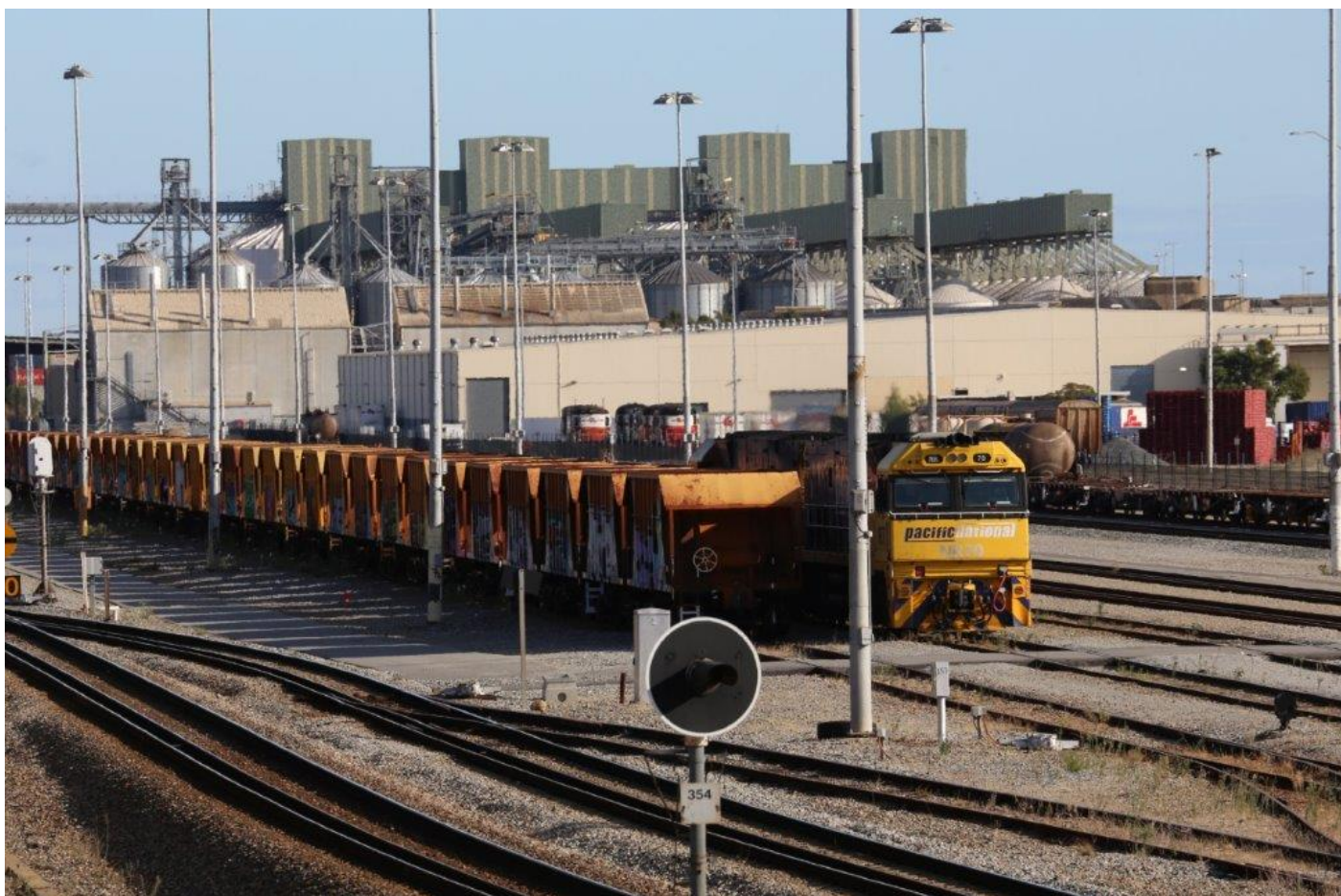
NRs 70 & 55 stabled on an empty intermodal, with another pair of NRs in the distance, 13<sup>th</sup> April.



NRs 113, 50 & 72 run around a rake of Sadleirs vans, Forrestfield, 13<sup>th</sup> April.

Both photos: Graham Saunders





NRs 70 & 55 beside a rake of stored CHEY hoppers; stored SCT H and K class locos, Forrestfield, 13<sup>th</sup> April.



Cannibalised and stored H & K class locos, SCT Forrestfield, 13<sup>th</sup> April.

Both photos: Graham Saunders





Leased replacement shunter 8026, SCT Forrestfield, 13<sup>th</sup> April.



NRs 113, 50 & 72 on the Sadleirs shunt, Forrestfield, 13<sup>th</sup> April.

Both photos: Graham Saunders





DRs 1564 & 1565 chug through Bringo on 3BT2 ballast, 14<sup>th</sup> April.

Photo: Phil Melling



Awaiting lead unit Q4010, Q4014 on 426 to Perth, with MRL004 for UGL Bassendean, 14/4.

Photo: Peter Donaghy





After a minor derailment at Hampton 10 days earlier, Q4002 receives attention, 14/4. Photo: Peter Donaghy



DRs 1565 & 1564 depart Narngulu with 7BT2 ballast, 18<sup>th</sup> April.

Photo: Phil Melling





Before sunrise, 7025 approaches West Kal behind Q4014, AC4304, MRL002 & Q4008, 19/4.



Q4014, AC4304, MRL002 & Q4008 shunt 7025, West Kal, 19<sup>th</sup> April.

Both photos: Peter Donaghy





ACC6032, CF4405 & MRL001 enter Esperance yard with PN's 7037 loaded ore, as ACC6031 & AC4306 (with AC4303 & CF4406 DPU) prepare to depart with Aurizon's 1044 empty ore, 19<sup>th</sup> April. Photo: Phillip Martin