

West Australian Rails

NUMBER 8 A free monthly photo e-Mag of railway happenings in WA during August 2020

PUBLISHER Peter Donaghy

Email: peterdonaghy2@bigpond.com

Copyright: Peter Donaghy © 2020



New BHP SD70ACe/LCi units 4497, 4492, 4496 & 4493 await transfer to the rails, 1st August.

Photo: Toad Montgomery

Q4004 finally emerged from its lengthy overhaul on September 1st, resplendent in the current austerity Aurizon scheme.

ACC6030 was outshopped from fire repairs at UGL Bassendean on 9th September, then spent four days at Forrestfield before returning to West Kalgoorlie. It re-entered Kooly ore service on 15th September.

Kooly ore trains have finally all returned to full consists with 2+2 DPU mode by mid September.

Qs 4002 & 4003 worked to Avon yard in late September to collect LZs 3119 and 3120, to haul back to Forrestfield for return to service. However, after several hours, the move was aborted and the locos returned light to Kwinana the next day.



CBHs 009, 025, 011 & 006 load 6K05 grain at Brookton, 1st August.

Both photos: Phil Melling



1720 empty Mt Gibson ore crosses the Greenough River at Eradu, behind Ps 2516, 2506 & 2505, 2nd August.



Ps 2502, 2504 & 2515 haul 1721 loaded Mt Gibson ore through Bringo, 2nd August.



Ps 2515, 2504 & 2502 on 4721 loaded Mt Gibson ore at Moonyoonooka, 5th August.

Both photos: Phil Melling



7720 empty Mt Gibson ore climbs through Bringoo behind Ps 2505, 2508 & 2506, 8th August. Photo: Phil Melling



Freshly overhauled SCT007 trails SCT010 into Parkeston with 5MP9, 8th August. Photo: Peter Donaghy



Looking west across the De Grey River bridge on the disused Yarrie line, 13th August. Both photos: Roland Depth



Derailed hoppers abandoned beside the Yarrie line, between Goldsworthy and Taplin sidings, 13th August.



ACN4168 stands on an empty Karara ore rake at Narngulu, 13th August.



6761 loaded Karara ore is led through Bringo by ACNs 4171, 4151 & 4149, 14th August. Both photos: Phil Melling



The silence at Golden Ridge is disturbed by NRs 2 & 28 on 6PM7, 15th August.

Photo: Peter Donaghy



NR75 prepares to depart Kewdale with 7PX4, 15th August.

Photo: Simon Barber



BRS221 has followed BRS222 through refurbishment and repaint – Parkeston, 16th August.



Solo CSR012 leads extra service 7PA9 through drizzle at Parkeston, 16th August.

Both photos: Peter Donaghy



Ps 2505, 2508 & 2502 crest a grade at Tenindewa with 1720 empty Mt Gibson ore, 16th August. Photo: Phil Melling



1040 empty ore at Binduli, 16th August. ACC6032, MRL004 & CF4408 will detach MRL003. Photo: Peter Donaghy



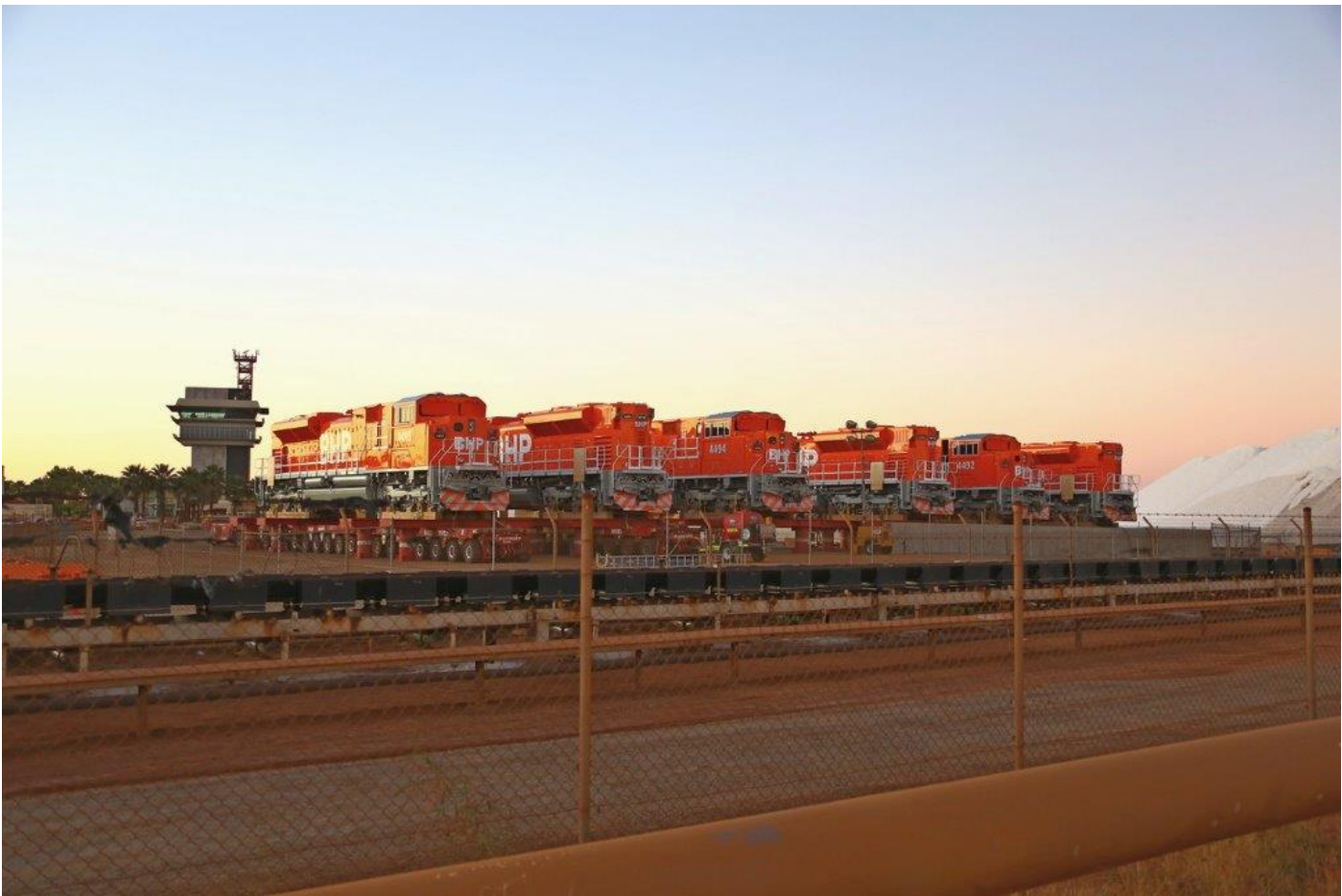
Rail advertising NRs 14 & 84 lead Indian Pacific NR26 on 6MP5, Bellevue, 17th August. Photo: Simon Barber



Extra service 2AP9 arrives at Parkeston near sunset, led by CSR006 & CF4410, 18th August. Photo: Peter Donaghy



MRL005 & CF4407 and MHPY rake, 19/8, at West Kal for two weeks, no room at Esperance. Photo: Peter Donaghy



New BHP units 4495, 4493, 4494, 4496, 4492 & 4497 await transfer to rail, 19th August. Photo: Roland Depth



NRs 88, 87 & 71 on 5445 empty fuel for Esperance, NR71 to Kooly ore work, 20/8. Both photos: Peter Donaghy



6025 ex Perth approaches West Kal, 22nd August. Qs 4009 & 4003 haul MRL002 & AC4301 back from workshops.
 Page 12 of 26



7025 enters West Kal yard as 5SP5 (NRs 78 & 40) arrives on the main line, 22nd August.



ACs 4305 & 4303 with MRL004 arrive at Binduli with 7043 loaded ore, 22nd August.

Both photos: Peter Donaghy



The gantries lift 4493 off the transporter at Nelson point; 4492 waits its turn, 22/8.

Photo: Toad Montgomery



P2509 leads 7866 through Wokalup, 22nd August.

Photo: Simon Barber



NRs 52, 121 & 68, 5MP5 on main; MRL005 & CF4407 stabled; Qs 4009 & 4003, 7426; West Kalgoorlie, 22nd August.



Former BHP49 sleeps at Cockburn Cement's Parkeston plant, 22nd August.

Both photos: Phillip Martin



Q4011 rests between shunting duties, West Kalgoorlie, 22nd August.

Photo: Philip Martin



4496 & 4494 on the self-propelled modular transporters at Nelson Point, 23rd August.

Photo: Toad Montgomery



ACNs 4151 & 4142 haul 1762 empty Karara ore near Bell, 23rd August.



ACN4170 is the rear DPU on 1762 empty Karara ore, Tilley Junction, 23rd August.

Both photos: Phil Melling



4764 empty Karara ore departs Geraldton Port with ACNs 4143 & 4151 on the rear, 26th August. Photo: Phil Melling



Track recorder car IDV001 at Oats St, 27th August.

Photo: Simon Barber



G511 enters West Kalgoorlie yard with 5BT1 after ballasting near Doney on the Leonora line, 27th August.



6BT1 approaches the outskirts of Kalgoorlie on the Leonora line, 28th August.

Both photos: Peter Donaghy



AC4306, NR71 & AC4301 approach Bonnie Vale with 6044 empty ore, 29th August.



6PM7 midway between Bonnie Vale and West Kalgoorlie, NRs 11 & 117, 29th August. Both photos: Peter Donaghy



7721 loaded Mt Gibson ore departs Monger behind Ps 2516, 2504 & 2514, 29th August. Photo: Phil Melling



NRs 1 & 21 lead 5SP5 between West Kal and Bonnie Vale, 29th August. Photo: Peter Donaghy



CSR006 & SCT003 accelerate 6PM9 away from the Bonnie Vale weighbridge, 29th August.



NRs 50 & 89 on 6PM6 slow for the weighbridge ahead, Bonnie Vale, 29th August.

Both photos: Peter Donaghy



ACC6032, NR24 & MRL006 run along Bonnie Vale main with 7043 ore, 29th August.



7030 empty ore departs Hampton, led by ACB4402 & NR81, 29th August.

Both photos: Peter Donaghy



DPU on 7030 are CF4406 & AC4307, Hampton, 29th August.



A late 5MP9 is led into Parkeston by SCTs 014 & 001, 29th August.

Both photos: Peter Donaghy



The sun is setting as 5MP5 arrives at Parkeston, led by NRs 13 & 120, 29th August.

Photo: Peter Donaghy



The evening sun gleams on ACNs 4172 & 4151 on 7764 empty Karara ore, Wicherina, 29th August. Photo: Phil Melling



Ps 2516, 2515 & 2508 blast through Ambania with 1720 empty Mt Gibson ore, 30th August.

Photo: Phil Melling